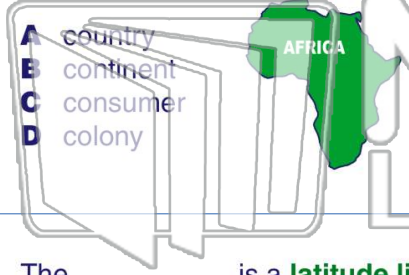




Name _____ Class _____ Date _____

1 A _____ is one of seven large bodies of land on earth.



- A country
- B continent
- C consumer
- D colony

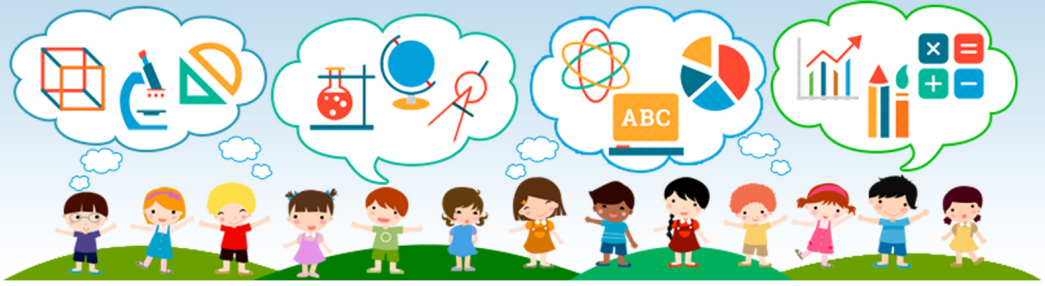
2 Shapes on the surface of the earth are known as _____.

- A landforms
- B boundaries
- C governments
- D ancestors

3 The _____ is a latitude line on a map or globe that divides the world in half

4 North, south, east, and west are the _____ directions.

5



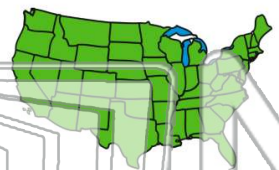
PREVIEW

Please [Sign In](#) or [Sign Up](#) to download the printable version of this worksheet

7

that tells what the symbols mean.

- A lake
- B legend
- C atlas
- D custom



grow a crop are the _____.

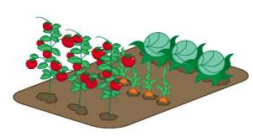
- A ancestors
- B resources
- C producers
- D cardinals



9

The things people make or grow to be sold are known as _____.

- A goods
- B stores
- C schools
- D spaces



10

Policemen, firemen, and teachers offer _____ to our community.

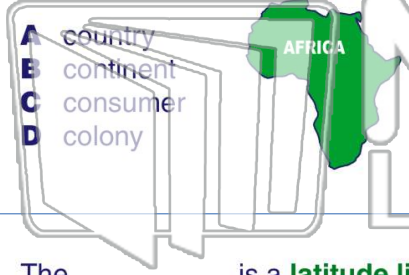
- A something
- B services
- C symbols
- D allowances





Name _____ Class _____ Date _____

1 A _____ is one of seven large bodies of land on earth.



- A country
- B continent
- C consumer
- D colony

2 Shapes on the surface of the earth are known as _____.

- A landforms
- B boundaries
- C governments
- D ancestors

3 The _____ is a latitude line on a map or globe that divides the world in half

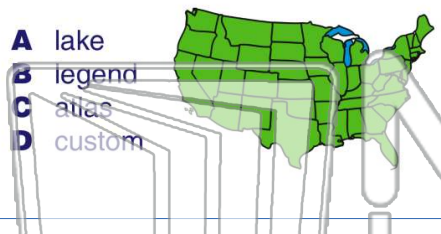
4 North, south, east, and west are the _____ directions.



PREVIEW

Please [Sign In](#) or [Sign Up](#) to download the printable version of this worksheet

7 _____ that tells what the symbols mean.



- A lake
- B legend
- C atlas
- D custom

8 _____ grow a crop are the _____.



- A ancestors
- B resources
- C producers
- D cardinals

9 The things people make or grow to be sold are known as _____.

- A goods
- B stores
- C schools
- D spaces



10 Policemen, firemen, and teachers offer _____ to our community.



- A something
- B services
- C symbols
- D allowances