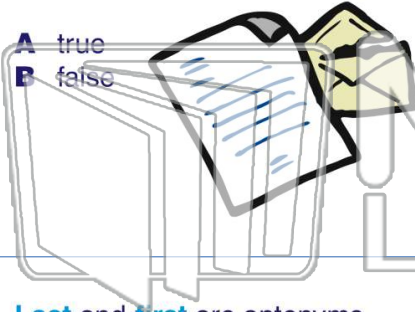




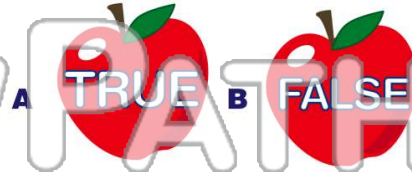
Name \_\_\_\_\_ Class \_\_\_\_\_ Date \_\_\_\_\_

1 **Send** and **receive** are antonyms.

- A true
- B false



2 **Sharp** and **dull** are antonyms.



3 **Last** and **first** are antonyms.

- A true



4 **Narrow** and **wide** are antonyms.



5

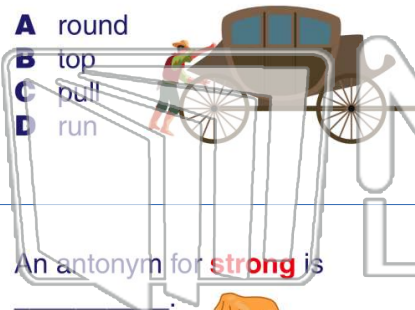


## PREVIEW

Please [Sign In](#) or [Sign Up](#) to download the printable version of this worksheet

7

- A round
- B top
- C pull
- D run



- A silent
- B friend
- C nice
- D cloudy



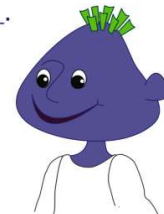
9 An antonym for **strong** is

- A noisy
- B green
- C weak
- D circle



10 An antonym for **smile** is

- A enemy
- B purple
- C triangle
- D frown

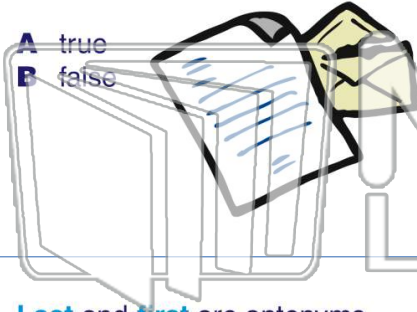




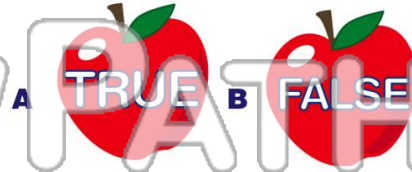
Name \_\_\_\_\_ Class \_\_\_\_\_ Date \_\_\_\_\_

1 **Send** and **receive** are antonyms.

- A true
- B false



2 **Sharp** and **dull** are antonyms.



3 **Last** and **first** are antonyms.

- A true



4 **Narrow** and **wide** are antonyms.



5



## PREVIEW

Please [Sign In](#) or [Sign Up](#) to download the printable version of this worksheet

7

- A round
- B top
- C pull
- D run



- A silent
- B friend
- C nice
- D cloudy



9 An antonym for **strong** is

- A noisy
- B green
- C weak
- D circle



10 An antonym for **smile** is

- A enemy
- B purple
- C triangle
- D frown

