



Name \_\_\_\_\_ Class \_\_\_\_\_ Date \_\_\_\_\_

1 The dog will **bark** at the mailman.  
In this sentence, **bark** means



- A to make a noise
- B the outside of a tree
- C a bumpy road
- D a green desk

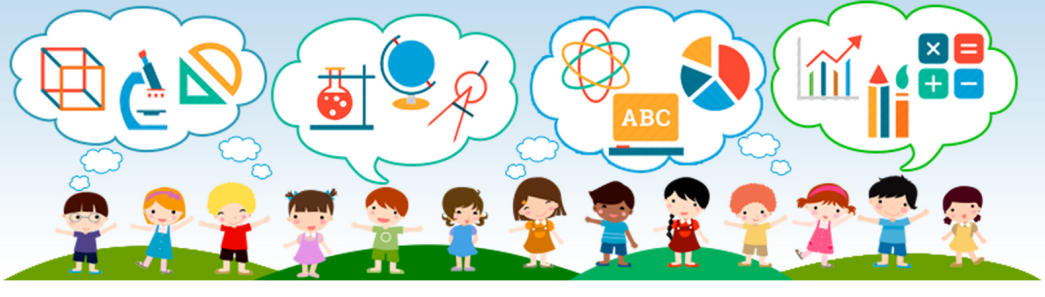
2 The **bark** of the tree is brown.  
In this sentence, **bark** means



- A to make a noise
- B the outside of a tree
- C a bumpy road
- D a green desk

3 Do not **slip** on the waxed floor.  
In this sentence, **slip** means

4 Logan gave the permission **slip** to his teacher.  
In this sentence, **slip** means

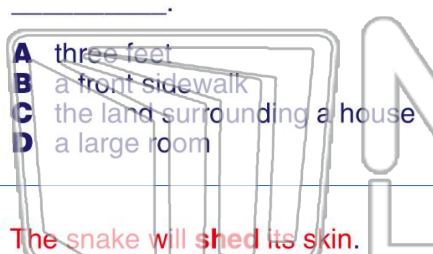


5

## PREVIEW

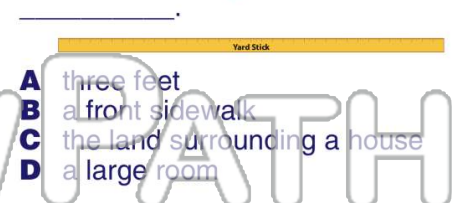
Please [Sign In](#) or [Sign Up](#) to download the printable version of this worksheet

7 In this sentence, **yard** means



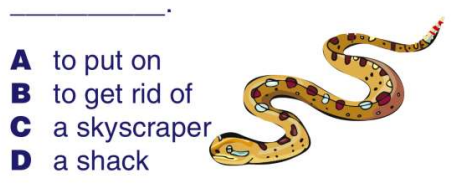
- A three feet
- B a front sidewalk
- C the land surrounding a house
- D a large room

In this sentence, **yard** means



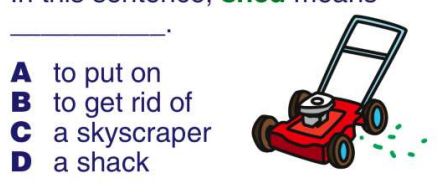
- A three feet
- B a front sidewalk
- C the land surrounding a house
- D a large room

9 The snake will **shed** its skin.  
In this sentence, **shed** means



- A to put on
- B to get rid of
- C a skyscraper
- D a shack

10 Dad built a **shed** in the backyard for the lawnmower.  
In this sentence, **shed** means



- A to put on
- B to get rid of
- C a skyscraper
- D a shack



Name \_\_\_\_\_ Class \_\_\_\_\_ Date \_\_\_\_\_

1 The dog will **bark** at the mailman.  
In this sentence, **bark** means



- A to make a noise
- B the outside of a tree
- C a bumpy road
- D a green desk

2 The **bark** of the tree is brown.  
In this sentence, **bark** means



- A to make a noise
- B the outside of a tree
- C a bumpy road
- D a green desk

3 Do not **slip** on the waxed floor.  
In this sentence, **slip** means

4 Logan gave the permission **slip** to his teacher.  
In this sentence, **slip** means



5

**PREVIEW**

Please [Sign In](#) or [Sign Up](#) to download the printable version of this worksheet

7 In this sentence, **yard** means



- A three feet
- B a front sidewalk
- C the land surrounding a house
- D a large room

In this sentence, **yard** means



- A three feet
- B a front sidewalk
- C the land surrounding a house
- D a large room

9 The snake will **shed** its skin.  
In this sentence, **shed** means



- A to put on
- B to get rid of
- C a skyscraper
- D a shack

10 Dad built a **shed** in the backyard for the lawnmower.  
In this sentence, **shed** means



- A to put on
- B to get rid of
- C a skyscraper
- D a shack