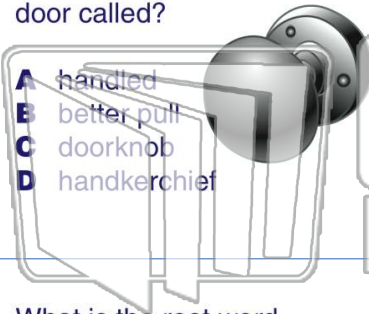




Name _____ Class _____ Date _____

1 What is the **handle** on a door called?

- A handled
- B better pull
- C doorknob
- D handkerchief



2 Change the prefix on **description** to make a word that means books or magazines are sent to you on a weekly or monthly schedule.

- A prescription
- B scribbling
- C subscription
- D describing

3 What is the root word for **punctuation**?

4 What is the root word for **flotation**?



PREVIEW

Please [Sign In](#) or [Sign Up](#) to download the printable version of this worksheet

7 _____ meaning is a _____.

- A suffix
- B prefix
- C event
- D capital



sure way?

- A shirtless
- B certainly
- C usual
- D unusual

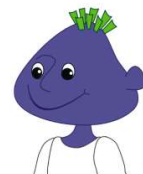
9 A person who is full of **poise** and **balance** is _____.

- A nicely
- B poiseless
- C graceful
- D proudly



10 When you do something in a **happy way**, you do it _____.

- A cheerfully
- B happiness
- C wearily
- D hapless

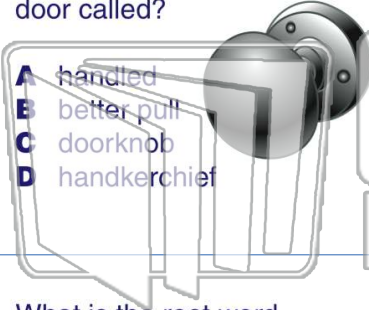




Name _____ Class _____ Date _____

1 What is the **handle** on a door called?

- A handled
- B better pull
- C doorknob
- D handkerchief



2 Change the prefix on **description** to make a word that means books or magazines are sent to you on a weekly or monthly schedule.

- A prescription
- B scribbling
- C subscription
- D describing

3 What is the root word for **punctuation**?

4 What is the root word for **flotation**?



PREVIEW

Please [Sign In](#) or [Sign Up](#) to download the printable version of this worksheet

7 _____ meaning is a _____.

- A suffix
- B prefix
- C event
- D capital



_____ sure way?

- A shirtless
- B certainly
- C usual
- D unusual

9 A person who is full of **poise** and **balance** is _____.

- A nicely
- B poiseless
- C graceful
- D proudly



10 When you do something in a **happy way**, you do it _____.

- A cheerfully
- B happiness
- C wearily
- D hapless

