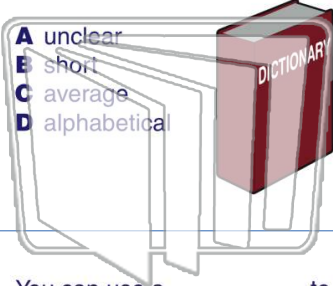




Name _____ Class _____ Date _____

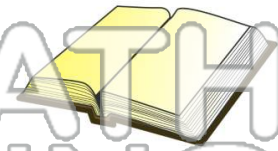
1 A **dictionary** contains a(n) _____ list of **words and their meanings**.

- A unclear
- B short
- C average
- D alphabetical



2 A **thesaurus** is a collection of _____ and antonyms.

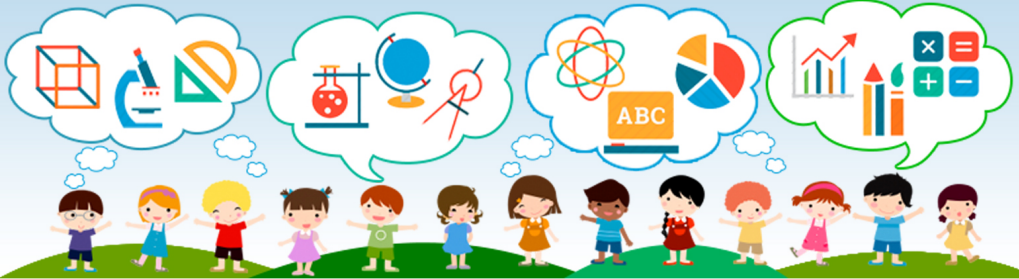
- A sentences
- B nouns
- C synonyms
- D adjectives



NEW PATH LEARNING

3 You can use a _____ to look up the **definition** of a word you do not know.

4 You can use a **thesaurus** to _____ **interesting** words to your writing.



5

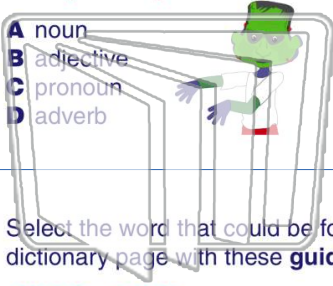
PREVIEW

Please [Sign In](#) or [Sign Up](#) to download the printable version of this worksheet

7 2. a person with an unsightly appearance

What part of speech is the word **fright**?

- A noun
- B adjective
- C pronoun
- D adverb



- A a great
- B a short
- C a long
- D the same



NEW PATH LEARNING

9 Select the word that could be found on a dictionary page with these **guide words**.

CHEER - CURB

- A chair
- B climb
- C curd
- D cheddar



10 A _____ may have **more than one meaning**.

- A word
- B syllable
- C car
- D street

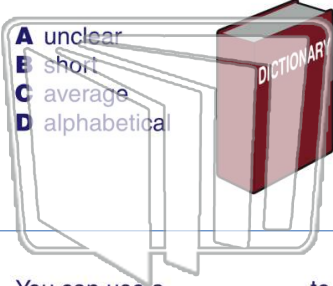




Name _____ Class _____ Date _____

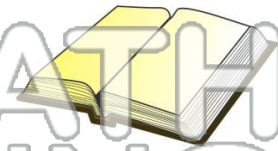
1 A **dictionary** contains a(n) _____ list of **words and their meanings**.

- A unclear
- B short
- C average
- D alphabetical



2 A **thesaurus** is a collection of _____ and antonyms.

- A sentences
- B nouns
- C synonyms
- D adjectives



NEW PATH LEARNING

3 You can use a _____ to look up the **definition** of a word you do not know.

4 You can use a **thesaurus** to _____ **interesting** words to your writing.



5

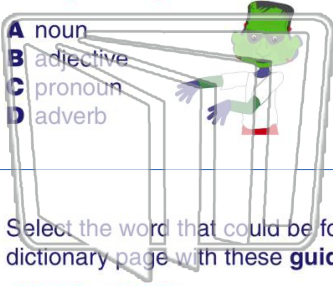
PREVIEW

Please [Sign In](#) or [Sign Up](#) to download the printable version of this worksheet

7 2. a person with an unsightly appearance

What part of speech is the word **fright**?

- A noun
- B adjective
- C pronoun
- D adverb



- A a great
- B a short
- C a long
- D the same



9 Select the word that could be found on a dictionary page with these **guide words**.

CHEER - CURB

- A chair
- B climb
- C curd
- D cheddar



10 A _____ may have **more than one meaning**.

- A word
- B syllable
- C car
- D street

