



Name _____ Class _____ Date _____

1. Root Words, Prefixes & Suffixes

Add a **prefix** or **suffix** to each root word.
Write the new word on the line.

happy – _____

collect – _____

3. Parts of a Book

Which book **part** helps you quickly find **keywords** when doing research?

2. Nonfiction Text Features

Read the paragraph, then write a **headline**.

Storm chasers follow big storms, like tornadoes, to learn more about them. Some of them are scientists who study the weather, others take pictures or videos to show what the storms look like. Even though this work can be dangerous, storm chasers help us understand how storms work and give warnings to help protect communities.

4. Literary Elements

Write a noun to complete each **simile**.

5. Main Idea & Supporting Details

Which is a **supporting detail** of this paragraph?



PREVIEW

Please [Sign In](#) or [Sign Up](#) to download
the printable version of this worksheet

Which analogy compares a whole to a part? Check it.

☐ Kitten is to cat as
duckling is to duck.

☐ Bike is to wheel as
book is to page.

☐ Deer is to forest as
fish is to pond.

9. Punctuation Marks

Add the correct terminal punctuation marks.

Let's walk to the park _____

When is your birthday _____

What time is the soccer match _____



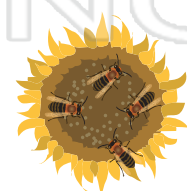
10. Spelling: Plurals & Possessives

Circle the correct plural forms.



foxs

foxes



bees

bee's



Name _____ Class _____ Date _____

1. Root Words, Prefixes & Suffixes

Add a **prefix** or **suffix** to each root word.
Write the new word on the line.

happy – **open-ended**

collect – **open-ended**

3. Parts of a Book

Which book **part** helps you quickly find **keywords** when doing research?

the index

2. Nonfiction Text Features

Read the paragraph, then write a **headline**.

open-ended

Storm chasers follow big storms, like tornadoes, to learn more about them. Some of them are scientists who study the weather, others take pictures or videos to show what the storms look like. Even though this work can be dangerous, storm chasers help us understand how storms work and give warnings to help protect communities.

4. Literary Elements

Write a noun to complete each **simile**.

5. Main Idea & Supporting Details

Which is a **supporting detail** of this paragraph?



PREVIEW

Please [Sign In](#) or [Sign Up](#) to download
the printable version of this worksheet

Which analogy compares a whole to a part? Check it.



Kitten is to cat as
duckling is to duck.



Bike is to wheel as
book is to page.



Deer is to forest as
fish is to pond.

9. Punctuation Marks

Add the correct **terminal punctuation marks**.

Let's walk to the park **.**

When is your birthday **?**

What time is the soccer match **?**



10. Spelling: Plurals & Possessives

Circle the correct **plural forms**.



foxs

foxes



bees

bee's