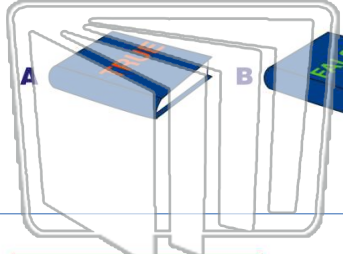




Name \_\_\_\_\_ Class \_\_\_\_\_ Date \_\_\_\_\_

1 Every word in a textbook will be listed in the book's **glossary**.



2

|                          |       |
|--------------------------|-------|
| 1. Sears Tower           | 2-15  |
| 2. Empire State Building | 16-23 |
| 3. Aon Centre            | 24-39 |
| 4. John Hancock Center   | 40-48 |
| 5. Chrysler Building     | 49-61 |

What is the **title** of Chapter 5?

**A** Sears Tower  
**B** Chrysler Building  
**C** John Hancock Center  
**D** Empire State Building

3

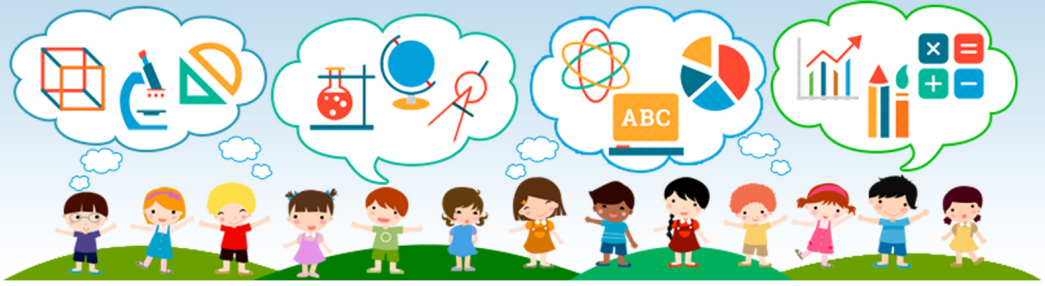
|         |       |
|---------|-------|
| Growth  | 8-16  |
| Harvest | 17-20 |
| Recipes | 26-36 |



4

|                 |       |
|-----------------|-------|
| Cloud formation | 7-9   |
| Fronts          | 37-39 |
| Hail            | 16-19 |

On what pages will you **most likely** find information about how clouds

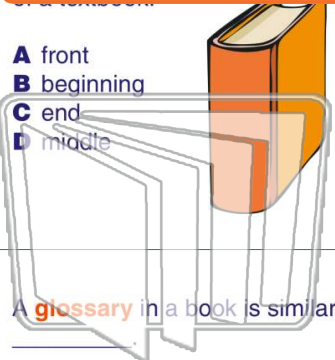


5

## PREVIEW

Please [Sign In](#) or [Sign Up](#) to download the printable version of this worksheet

7



- A** front
- B** beginning
- C** end
- D** middle

8

|                                   |       |
|-----------------------------------|-------|
| 2. Ice Cream Ingredients          | 12-24 |
| 3. From the Factory to Your Table | 25-34 |
| 4. Delicious Flavors              | 35-48 |
| 5. Famous Ice Cream Parlors       | 49-56 |



On what page does Chapter 1 start?

**A** 2                      **C** 25  
**B** 12                     **D** 1

9 A **glossary** in a book is similar to a

- A** table of contents
- B** graph
- C** dictionary
- D** map

10

|                                       |       |
|---------------------------------------|-------|
| 1. Famous Poets                       | 3-11  |
| 2. Time to Rhyme                      | 12-19 |
| 3. Repetition, Repetition, Repetition | 18-27 |
| 4. Poems Have Rhythm                  | 28-40 |
| 5. Types of Poems                     | 41-52 |
| 6. Popular Poems                      | 51-73 |

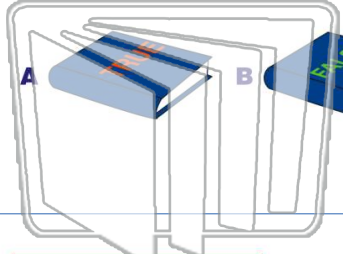
How many **pages** are in this book?

**A** 29                      **C** 55  
**B** 73                      **D** 54



Name \_\_\_\_\_ Class \_\_\_\_\_ Date \_\_\_\_\_

1 Every word in a textbook will be listed in the book's **glossary**.



2

| THE TALLEST BUILDINGS IN THE UNITED STATES |       |
|--|-------|
| 1. Sears Tower                             | 2-15  |
| 2. Empire State Building                   | 16-23 |
| 3. Aon Centre                              | 24-39 |
| 4. John Hancock Center                     | 40-48 |
| 5. Chrysler Building                       | 49-61 |

What is the **title** of Chapter 5?

A Sears Tower  
 B Chrysler Building  
 C John Hancock Center  
 D Empire State Building



3

| INDEX: APPLES |       |
|---------------|-------|
| Growth        | 8-16  |
| Harvest       | 17-20 |
| Recipes       | 26-36 |



4

| INDEX: WEATHER  |       |
|-----------------|-------|
| Cloud formation | 7-9   |
| Fronts          | 37-39 |
| Hail            | 16-19 |

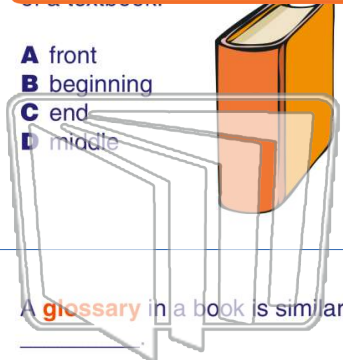
On what pages will you **most likely** find information about how clouds

5

**PREVIEW**

Please [Sign In](#) or [Sign Up](#) to download the printable version of this worksheet

7



- A front
- B beginning
- C end
- D middle

8

|                                   |       |
|-----------------------------------|-------|
| 2. Ice Cream Ingredients          | 12-24 |
| 3. From the Factory to Your Table | 25-34 |
| 4. Delicious Flavors              | 35-48 |
| 5. Famous Ice Cream Parlors       | 49-56 |



On what page does Chapter 1 start?

A 2                      C 25  
 B 12                     D 1

9 A **glossary** in a book is similar to a

- A table of contents
- B graph
- C dictionary
- D map

10

| HOW TO WRITE A POEM - Table of Contents |       |
|---|-------|
| 1. Famous Poets                         | 3-11  |
| 2. Time to Rhyme                        | 12-19 |
| 3. Repetition, Repetition, Repetition   | 18-27 |
| 4. Poems Have Rhythm                    | 28-40 |
| 5. Types of Poems                       | 41-52 |
| 6. Popular Poems                        | 51-73 |

How many **pages** are in this book?

A 29                      C 55  
 B 73                      D 54