



Text Features

ELA
D

Name _____ Class _____ Date _____

1 What would be the **best headline** in a newspaper for a story about a **fireman** rescuing several people from a fire?

- a. Fireman Fred
- b. No One was Hurt
- c. Local Fireman Rescues Three from Blazing Fire



6 A local newspaper prints a **picture** of a cat in a tree, and a group of people looking up at it. Choose the **best caption** for the picture.

- a. Cats make good pets.
- b. Cat likes to eat chicken.
- c. Who's more worried – the cat or the people?



2 The job of a _____ is to **grab the readers' attention** and brief article is



7 **Captions** may inform you of additional

sideba

titles



particular street of the map

3 **Textbook** may find

- a. glos
- b. tabl
- c. cov

PREVIEW

Please [Sign In](#) or [Sign Up](#) to download the printable version of this worksheet

index

4 **Maps** often use _____ to represent things like campgrounds, golf courses, schools, and parks.

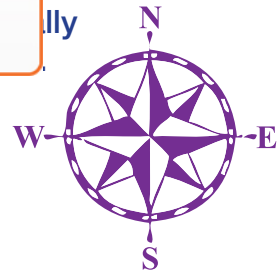


Name them.

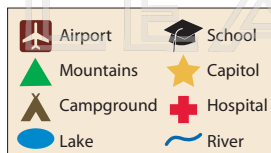
flags

pages

symbols



5 **Symbols** are located on a _____ of a map.



10 A newspaper prints an article about a **baseball team** called the Bears winning a game by a lot of points.

Write a heading for this story.



legend

compass

sidebar



Text Features - Answer Key

ELA
D

Name _____ Class _____ Date _____

1 What would be the **best headline** in a newspaper for a story about a **fireman** rescuing several people from a fire?

- a. Fireman Fred
- b. No One was Hurt
- c. Local Fireman Rescues Three from Blazing Fire



6 A local newspaper prints a **picture** of a cat in a tree, and a group of people looking up at it. Choose the **best caption** for the picture.

- a. Cats make good pets.
- b. Cat likes to eat chicken.
- c. Who's more worried – the cat or the people?



2 The job of a _____ is to **grab the readers' attention** and brief article is



7 **Captions** may inform you of additional

sideba

titles

3 **Textbook** may find

- a. glos
- b. tabl
- c. cov



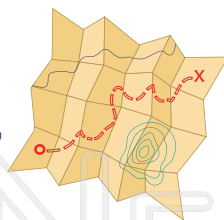
particular street of the map

PREVIEW

Please [Sign In](#) or [Sign Up](#) to download the printable version of this worksheet

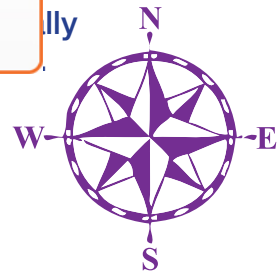
index

4 **Maps** often use _____ to represent things like campgrounds, golf courses, schools, and parks.



Name them.

North, South, East, West

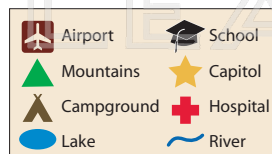


flags

pages

symbols

5 **Symbols** are located on a _____ of a map.



10 A newspaper prints an article about a **baseball team** called the Bears winning a game by a lot of points.

Write a heading for this story.



open-ended

legend

compass

sidebar