



Name _____ Class _____ Date _____

1

Which sentence is a **fact**?

- A Birthday parties are always fun.
- B Blue is a great color.
- C My sister is younger than me.
- D Pumpkin pie is delicious.



2

Which sentence is an **opinion**?

- A The sun rises in the east.
- B Valentine's Day is in February.
- C Tennis is a fun sport to play.
- D The Post Office sells stamps.

3

It is important to check the weather report before you leave for school.

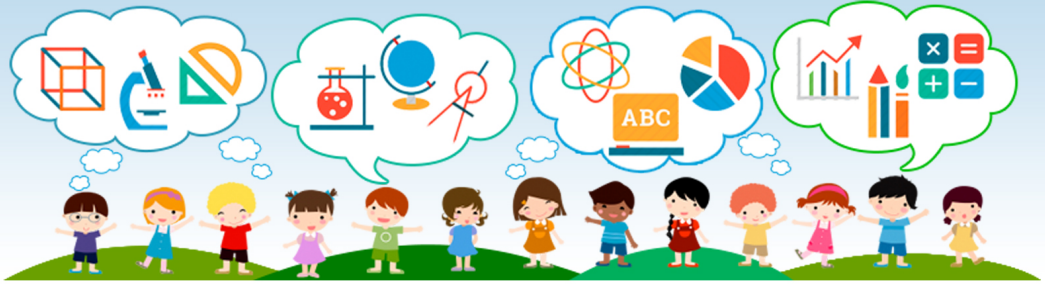
Is this sentence a fact or an opinion?

4

Choose the sentence that is a **fact**.

- A Roses are beautiful.

5

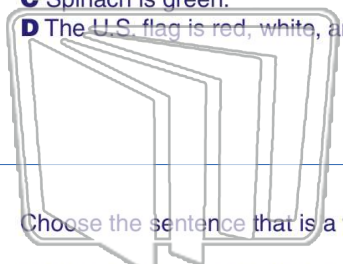


PREVIEW

Please [Sign In](#) or [Sign Up](#) to download the printable version of this worksheet

7

- A Chocolate tastes better than broccoli.
- B Neil Armstrong was an astronaut.
- C Spinach is green.
- D The U.S. flag is red, white, and blue.



Is this sentence a fact or an opinion?

- A a fact
- B an opinion



9

Choose the sentence that is a **fact**.

- A Multiplication is difficult to learn.
- B Gold is better than silver.
- C Diamonds are beautiful.
- D Your heart pumps blood throughout your body.

10

Choose the sentence that is an **opinion**.

- A Football is an exciting sport to watch.
- B The Bears won the game 17-3.
- C There are many stores in the mall.
- D Many birds eat seeds.



Name _____ Class _____ Date _____

1

Which sentence is a **fact**?

- A Birthday parties are always fun.
- B Blue is a great color.
- C My sister is younger than me.
- D Pumpkin pie is delicious.



2

Which sentence is an **opinion**?

- A The sun rises in the east.
- B Valentine's Day is in February.
- C Tennis is a fun sport to play.
- D The Post Office sells stamps.

3

It is important to check the weather report before you leave for school.

Is this sentence a fact or an opinion?

4

Choose the sentence that is a **fact**.

- A Roses are beautiful.

5



PREVIEW

Please [Sign In](#) or [Sign Up](#) to download the printable version of this worksheet

7

- A Chocolate tastes better than broccoli.
- B Neil Armstrong was an astronaut.
- C Spinach is green.
- D The U.S. flag is red, white, and blue.

A

Is this sentence a fact or an opinion?

- A a fact
- B an opinion

B

9

Choose the sentence that is a **fact**.

- A Multiplication is difficult to learn.
- B Gold is better than silver.
- C Diamonds are beautiful.
- D Your heart pumps blood throughout your body.

D

10

Choose the sentence that is an **opinion**.

- A Football is an exciting sport to watch.
- B The Bears won the game 17-3.
- C There are many stores in the mall.
- D Many birds eat seeds.

A