



Name _____ Class _____ Date _____

1 How do you indicate the **title of a movie**?

A make it bold
 B circle it
 C italicize it
 D capitalize all the letters in the title

2 Are **common nouns** capitalized?

A YES B NO

3 The wind blew the leaves rustled, and the tall grasses waved.
 What type of **punctuation** is needed

4 What an excellent opportunity for you
 What type of **punctuation** is needed at the end of this sentence?

5

PREVIEW

Please [Sign In](#) or [Sign Up](#) to download the printable version of this worksheet

7 of bubble bath.
 This sentence is _____.

A correct as it is
 B incorrect—change ! to ;
 C incorrect—change ! to :
 D incorrect—change ! to ;

Dear Sir:

A true
 B false

9 Do not use a period for the following abbreviations: Dr Ms

A TRUE B FALSE

10 When writing **dialogue**, what should you do when a **new speaker begins**?

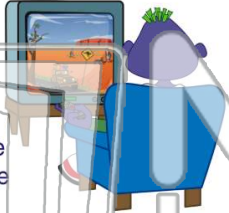
A begin a new page
 B begin a new paragraph
 C nothing—keep all the dialogue in one paragraph
 D begin a new chapter



Name _____ Class _____ Date _____

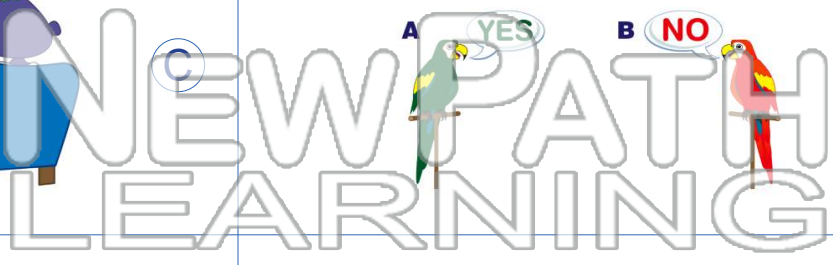
1 How do you indicate the **title of a movie**?

- A make it bold
- B circle it
- C italicize it
- D capitalize all the letters in the title



2 Are **common nouns** capitalized?

- A YES
- B NO



3 The wind blew the leaves rustled, and the tall grasses waved.
What type of **punctuation** is needed

4 What an excellent opportunity for you
What type of **punctuation** is needed at the end of this sentence?



5

PREVIEW

Please [Sign In](#) or [Sign Up](#) to download the printable version of this worksheet

7 _____ of bubble bath.
This sentence is _____.

- A correct as it is
- B incorrect—change ! to ;
- C incorrect—change ! to :
- D incorrect—change ! to ;



Dear Sir:

- A true
- B false



9 Do not use a period for the following abbreviations: Dr Ms

- A TRUE
- B FALSE

10 When writing **dialogue**, what should you do when a **new speaker begins**?

- A begin a new page
- B begin a new paragraph
- C nothing—keep all the dialogue in one paragraph
- D begin a new chapter

