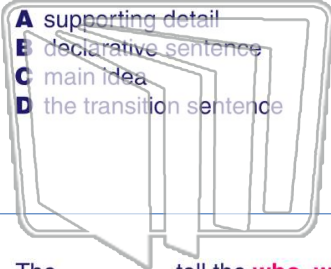




Name _____ Class _____ Date _____

1 The **general idea**, or **focus**, of a paragraph is called the _____.



2 **Supporting details** can be facts, examples, or reasons.

- A true
- B false

NEW PATH LEARNING

3 The _____ tell the **who**, **what**, **when**, and **why**, of a paragraph.

4 The following sentence is an example of a **main idea**.

Martin Luther King, Jr.



5

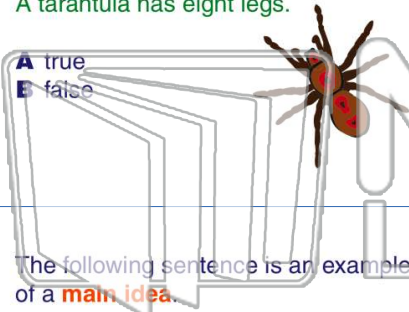
PREVIEW

Please [Sign In](#) or [Sign Up](#) to download the printable version of this worksheet

7 **Supporting detail**

A tarantula has eight legs.

- A true
- B false



Main idea

To get a sound out of the flute, one must purse his/her lips next to the hole and **blow air across it**.

- A true
- B false



9 The following sentence is an example of a **main idea**.

You can feed your pet lizard live crickets.

- A true
- B false



10 The following sentence is an example of a **supporting detail**.

One example of a craft at summer camp is making a picture frame out of seashells.

- A true
- B false





Name _____ Class _____ Date _____

1 The **general idea**, or **focus**, of a paragraph is called the _____.

- A supporting detail
- B declarative sentence
- C main idea
- D the transition sentence

2 **Supporting details** can be facts, examples, or reasons.

- A true
- B false



3 The _____ tell the **who**, **what**, **when**, and **why**, of a paragraph.

4 The following sentence is an example of a **main idea**.

Martin Luther King, Jr.



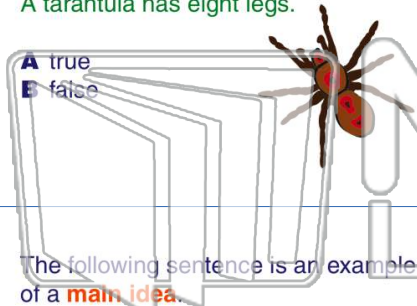
PREVIEW

Please [Sign In](#) or [Sign Up](#) to download the printable version of this worksheet

7 **Supporting detail**

A tarantula has eight legs.

- A true
- B false



Main idea

To get a sound out of the flute, one must purse his/her lips next to the hole and blow air across it.

- A true
- B false



9 The following sentence is an example of a **main idea**.

You can feed your pet lizard live crickets.

- A true
- B false



10 The following sentence is an example of a **supporting detail**.

One example of a craft at summer camp is making a picture frame out of seashells.

- A true
- B false

