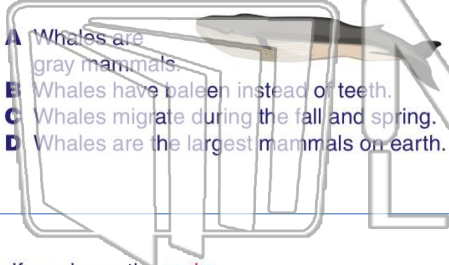




Name _____ Class _____ Date _____

1 What would be a **supporting detail** in an article that starts out, "Whales are beautiful, and powerful creatures of the sea?"

- A Whales are gray mammals.
- B Whales have baleen instead of teeth.
- C Whales migrate during the fall and spring.
- D Whales are the largest mammals on earth.



2 What would be a **supporting detail** in a story about famous soccer players?

- A Soccer is a popular game around the world.
- B Pele was a fast runner and a smart player.
- C Soccer players wear shoes with rubber cleats.
- D The goalie in soccer must be big and strong.

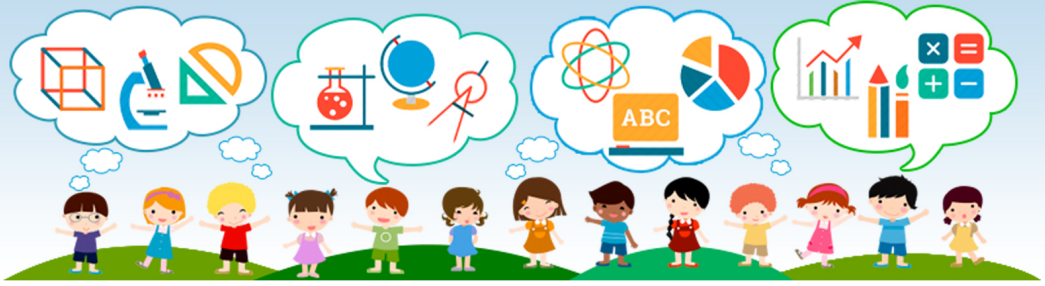


3 If you knew the **main character** in a story was **clever**, which **supporting detail** would you expect to find?



4 An armadillo has a hard shell-like body and sharp claws. It defends itself by burrowing into the ground or rolling into a ball. It can hold its breath under water for up to 6 minutes.

5

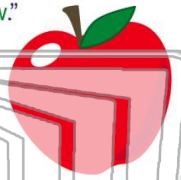


PREVIEW

Please [Sign In](#) or [Sign Up](#) to download the printable version of this worksheet

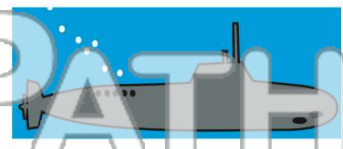
7 Growing apple trees appreciate just the right amount of sunshine and water to grow."

- A true
- B false



8 Submarine might be considered a vessel that travel under the water."

- A true
- B false



9 Two brothers worked together in a lawn-mowing business. They had 2 mowers and 2 trimmers. They shared the work and the pay. Their customers were pleased with their work. A **supporting detail** to show the brothers were hard workers might be _____.

- A the brothers only worked until noon
- B nobody has ever paid more than \$20
- C in one day, they mowed 5 large yards
- D the brothers had several helpers

10 A **supporting detail** in a story about **guide dogs** that are trained to assist blind people is _____.



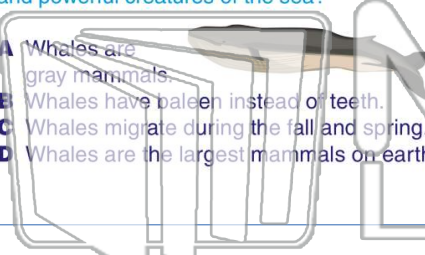
- A guide dogs are helpful to all people
- B only old people can have a guide dog
- C people are training guide cats too
- D intelligent puppies make the best guides



Name _____ Class _____ Date _____


1 What would be a **supporting detail** in an article that starts out, "Whales are beautiful, and powerful creatures of the sea?"

A Whales are gray mammals.
B Whales have baleen instead of teeth.
C Whales migrate during the fall and spring.
D Whales are the largest mammals on earth.




2 What would be a **supporting detail** in a story about famous soccer players?

A Soccer is a popular game around the world.
B Pele was a fast runner and a smart player.
C Soccer players wear shoes with rubber cleats.
D The goalie in soccer must be big and strong.



3 If you knew the **main character** in a story was clever, which **supporting detail** would you use?



4 An armadillo has a hard shell-like body and sharp claws. It defends itself by burrowing into the ground or rolling into a ball. It can hold its breath under water for up to 6 minutes.

5



PREVIEW

Please [Sign In](#) or [Sign Up](#) to download the printable version of this worksheet

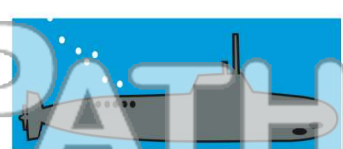
7 Growing apple trees appreciate just the right amount of sunshine and water to grow."

A true
B false



8 Submarine might be considered a vessel that travel under the water."

A true
B false



9 Two brothers worked together in a lawn-mowing business. They had 2 mowers and 2 trimmers. They shared the work and the pay. Their customers were pleased with their work. A **supporting detail** to show the brothers were hard workers might be _____.

A the brothers only worked until noon
B nobody has ever paid more than \$20
C in one day, they mowed 5 large yards
D the brothers had several helpers

10 A **supporting detail** in a story about guide dogs that are trained to assist blind people is _____.

A guide dogs are helpful to all people
B only old people can have a guide dog
C people are training guide cats too
D intelligent puppies make the best guides

