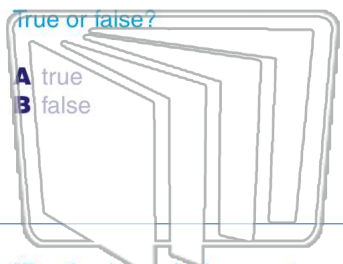




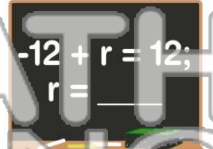
Name \_\_\_\_\_ Class \_\_\_\_\_ Date \_\_\_\_\_

1 A **comma** is necessary when a person is being spoken to, or **addressed**.



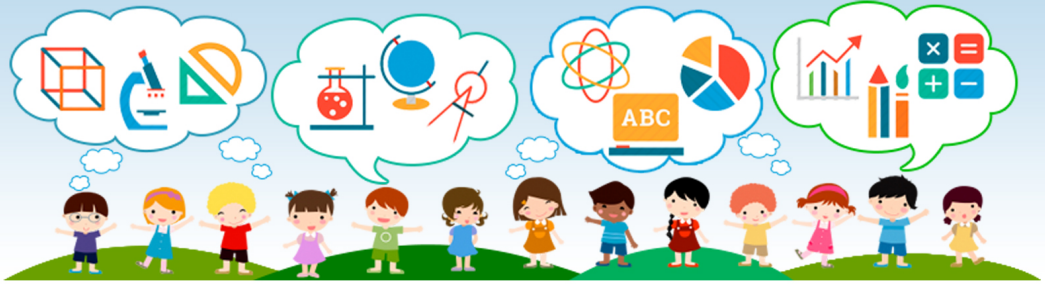
2 Mrs. Rivera may I come for extra help after school?  
Where does the **comma** belong in this sentence?

- A Mrs., Rivera
- B Rivera, may
- C come, for
- D help, after



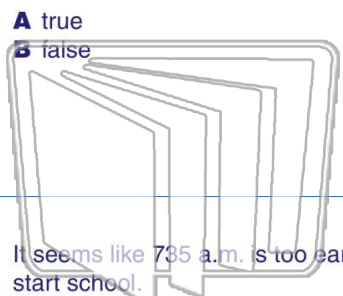
3 "Boating is a relaxing way to spend a summer afternoon" I replied.  
Where does the **comma** belong in this

4 My father was born on June 5 1971 in Houston Texas.  
How many **commas** are missing in



5 **PREVIEW**  
Please [Sign In](#) or [Sign Up](#) to download the printable version of this worksheet

7 True or false?



ruler, notebook paper, and two pencils.  
Where does the **colon** belong?

- A class: includes
- B following: items
- C items: a
- D notebook: paper



9 It seems like 7:35 a.m. is too early to start school.

This sentence includes all the **correct punctuation**.

True or false?

- A true
- B false



10 A **colon** is used after the calculation of a **business letter**.

True or false?

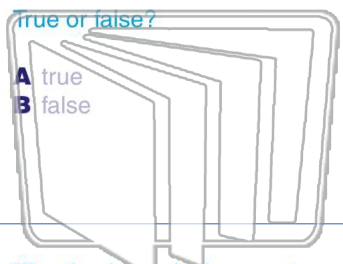
- A true
- B false





Name \_\_\_\_\_ Class \_\_\_\_\_ Date \_\_\_\_\_

1 A **comma** is necessary when a person is being spoken to, or **addressed**.

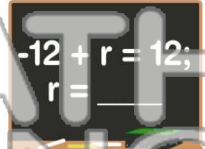


True or false?  
A true  
B false

2 Mrs. Rivera may I come for extra help after school?

Where does the **comma** belong in this sentence?

- A Mrs., Rivera
- B Rivera, may
- C come, for
- D help, after



3 "Boating is a relaxing way to spend a summer afternoon" I replied.  
Where does the **comma** belong in this

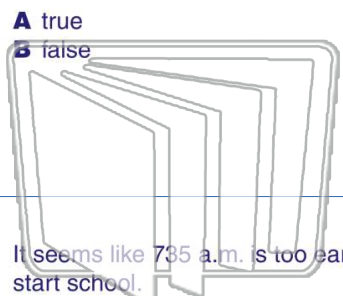
4 My father was born on June 5 1971 in Houston Texas.  
How many **commas** are missing in



## PREVIEW

Please [Sign In](#) or [Sign Up](#) to download the printable version of this worksheet

7 True or false?



A true  
B false

ruler, notebook paper, and two pencils.  
Where does the **colon** belong?

- A class: includes
- B following: items
- C items: a
- D notebook: paper



9 It seems like 7:35 a.m. is too early to start school.

This sentence includes all the **correct punctuation**.

True or false?

- A true
- B false



10 A **colon** is used after the calculation of a **business letter**.

True or false?

- A true
- B false

