



Name \_\_\_\_\_ Class \_\_\_\_\_ Date \_\_\_\_\_

1 Choose the **adverb** in this sentence.

After I got home from soccer practice, **hungrily** ate a snack.

- A I
- B home
- C soccer
- D hungrily



2 Choose the **adverb** in this sentence.

**During the concert**, Marissa played the piano **beautifully**.

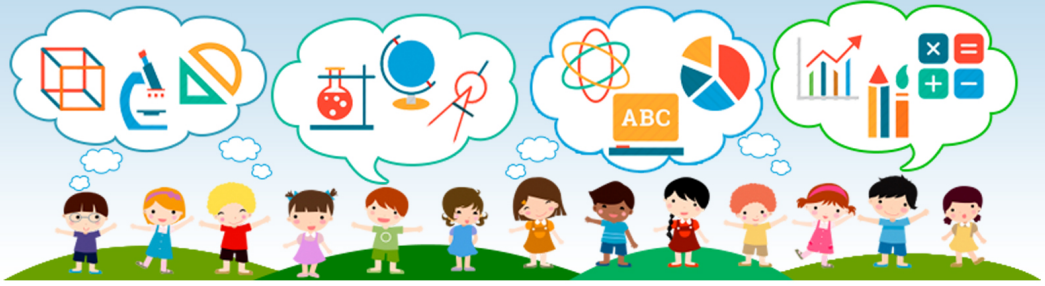
- A concert
- B Marissa
- C played
- D beautifully



3 Choose the **comparative** form of this adverb: **near**.

4 Choose the **comparative** form of this adverb: **quickly**.

5



## PREVIEW

Please [Sign In](#) or [Sign Up](#) to download the printable version of this worksheet

7

- A care
- B more carefully
- C most carefully
- D careful

- A faster
- B fastest
- C more faster
- D most fastest

9

This sentence is **correct**.  
My sister did the best of any speller in the spelling bee.

True or false?

- A true
- B false

10

This sentence is **correct**.  
At suppertime, my brother eats the more of anyone in our family.

True or false?

- A true
- B false





Name \_\_\_\_\_ Class \_\_\_\_\_ Date \_\_\_\_\_

1

Choose the **adverb** in this sentence.

After I got home from soccer practice, **hungrily** ate a snack.

- A I
- B home
- C soccer
- D hungrily



2

Choose the **adverb** in this sentence.

**During the concert**, Marissa played the piano **beautifully**.

- A concert
- B Marissa
- C played
- D beautifully



3

Choose the **comparative** form of this adverb: **near**.

4

Choose the **comparative** form of this adverb: **quickly**.

5

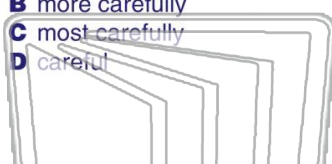


## PREVIEW

Please [Sign In](#) or [Sign Up](#) to download the printable version of this worksheet

7

- A care
- B more carefully
- C most carefully
- D careful



C

- A faster
- B fastest
- C more faster
- D most fastest

9

This sentence is **correct**.

My sister did the best of any speller in the spelling bee.

True or false?

- A true
- B false

A

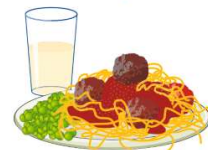
10

This sentence is **correct**.

At suppertime, my brother eats the more of anyone in our family.

True or false?

- A true
- B false



B