



# Punctuation

ELA  
H

Name \_\_\_\_\_ Class \_\_\_\_\_ Date \_\_\_\_\_

1 Which punctuation mark is used with an abbreviation? Circle it.

,   .   ?   !

2 An interrogative sentence ends with a \_\_\_\_\_. Circle it.

,   .   ?   !

3 Where does the comma belong in this sentence?



6 Which sentence is punctuated correctly?

- a. Your turning fourteen this year, right?
- b. You're turning fourteen this year, right?
- c. You're turning fourteen this year right.



7 Which sentence is punctuated correctly?

- a. Do you care – I hope you don't – if I go with you to the pool?
- b. Do you care; I hope you don't if I go with you to the pool?



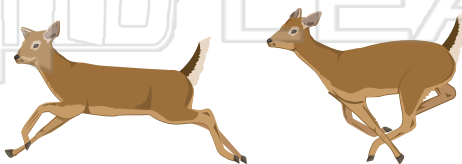
## PREVIEW

Please [Sign In](#) or [Sign Up](#) to download the printable version of this worksheet



4 Which word needs an apostrophe?  
The deers coat became thicker when the trees changed before the winter.

- a. deers
- b. coat
- c. tree



10 Which punctuation mark is used when a word will not fit on a line, and needs to be separated into two lines?

- a. semicolon
- b. colon
- c. hyphen





# Punctuation - Answer Key

ELA  
H

Name \_\_\_\_\_ Class \_\_\_\_\_ Date \_\_\_\_\_

1 Which punctuation mark is used with an abbreviation? Circle it.



2 An interrogative sentence ends with a \_\_\_\_\_. Circle it.



3 Where does the comma belong in this sentence?



6 Which sentence is punctuated correctly?

- a. Your turning fourteen this year, right?
- b. You're turning fourteen this year, right?
- c. You're turning fourteen this year right.



7 Which sentence is punctuated correctly?

- a. Do you care – I hope you don't – if I go with you to the pool?
- b. Do you care; I hope you don't if I go with you to the pool?



## PREVIEW

Please [Sign In](#) or [Sign Up](#) to download the printable version of this worksheet



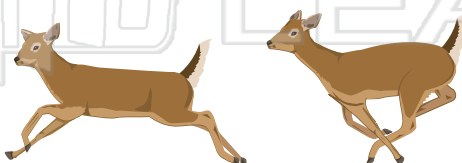
- 4 V
- I
- g
- a
- a
- b
- g
- g
- c. list: yogurt

- b. parentheses
- c. exclamation points

5 Which word needs an apostrophe?

The deers coat became thicker when the trees changed before the winter.

- a. deers
- b. coat
- c. tree



10 Which punctuation mark is used when a word will not fit on a line, and needs to be separated into two lines?

- a. semicolon
- b. colon
- c. hyphen

