



Name _____ Class _____ Date _____

1 What is the **difference**?

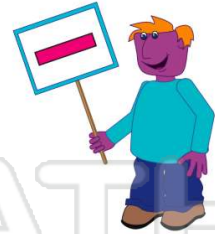
$$\begin{array}{r} 410 \\ - 237 \\ \hline \end{array}$$

- A 163
- C 127
- B 173
- D 287

2 What is the **difference**?

$$736 - 257 =$$

- A 479
- B 481
- C 521
- D 469



3 What is the **difference**?

$$\begin{array}{r} 516 \\ - 265 \\ \hline \end{array}$$

4 Greg has 509 cards. He sells 39. How many does he have left?

- A 480
- B 539



5



PREVIEW

Please [Sign In](#) or [Sign Up](#) to download the printable version of this worksheet

7

- A 185
- C 175
- B 215
- D 195

- A 729
- B 711
- C 721
- D 719



9 The train had 564 riders on Friday and 469 riders on Saturday. How many **more** riders were there on Friday?

- A 95
- B 85
- C 105
- D 106



10 What is the **difference**?

$$540 - 321 =$$

- A 209
- B 219
- C 201
- D 221





3 Digit Subtraction

Math

Name _____ Class _____ Date _____

1 What is the **difference**?

$$\begin{array}{r} 410 \\ - 237 \\ \hline \end{array}$$

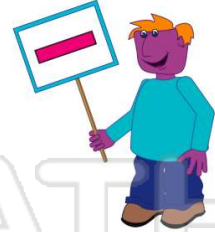
- A 163
- B 173
- C 127
- D 287

(B)

2 What is the **difference**?

$$736 - 257 =$$

- A 479
- B 481
- C 521
- D 469



(A)

3 What is the **difference**?

$$\begin{array}{r} 516 \\ - 265 \\ \hline \end{array}$$

(C)

4 Greg has 509 cards. He sells 39. How many does he have left?

- A 480
- B 500



(D)

5



(B)

PREVIEW

Please [Sign In](#) or [Sign Up](#) to download the printable version of this worksheet

7

- A 185
- B 215
- C 175
- D 195

- A 729
- B 711
- C 721
- D 719



(D)

9 The train had 564 riders on Friday and 469 riders on Saturday. How many **more** riders were there on Friday?

- A 95
- B 85
- C 105
- D 106



(A)

10 What is the **difference**?

$$540 - 321 =$$

- A 209
- B 219
- C 201
- D 221



(B)