



Whole numbers

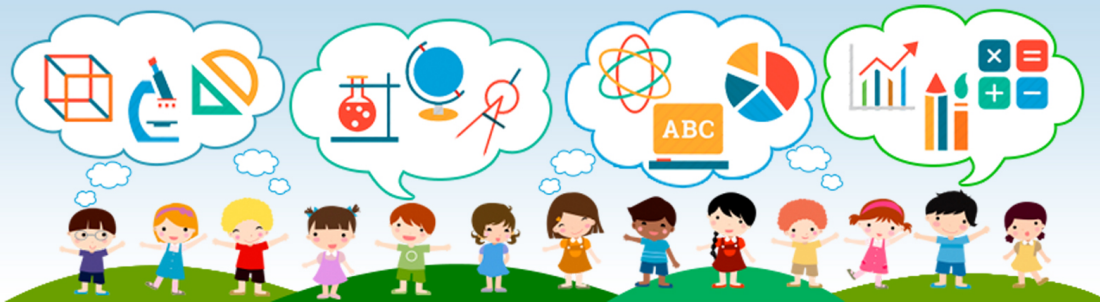
Math

Name _____ Class _____ Date _____

Add the money to find out how much it costs an adult to vacation in each place.

Vanuatu	Fiji	New Zealand	Hong Kong	London
\$1,000 \$100	\$1,000 \$100	\$1,000 \$20	\$1,000 \$100	\$1,000 \$100
\$100 \$100	\$50 \$100	\$100 \$5	\$1,000 \$100	\$1,000 \$100
\$100 \$20	\$20 \$10	\$2 \$1 \$10	\$20 \$100	\$1,000 \$50
Costs \$ _____	Costs \$ _____	Costs \$ _____	Costs \$ _____	Costs \$ _____

New York	Hawaii	Greece	Japan	Bali
\$1,000 \$20	\$1,000 \$1,000	\$1,000 \$100	\$1,000 \$5	\$1,000 \$100
\$1,000 \$20	\$1,000 \$100	\$1,000 \$100	\$1,000 \$20	\$100 \$50
\$50 \$10	\$1,000 \$10	\$50 \$100	\$1,000 \$100	\$100 \$2 \$2



PREVIEW

Please [Sign In](#) or [Sign Up](#) to download the printable version of this worksheet

3,500	3,400	5,600	6,500	1,200	1,500
9,850	4,320	2,340	2,430	6,260	5,990
7,324	1,854	1,965	2,005	6,927	6,827
3,401	3,104	6,832	6,932	5,647	5,648
8,193	8,391	4,438	4,428	6,823	8,623
4,682	4,268	1,984	1,981	6,774	7,674
1,485	1,584	8,062	8,162	7,948	7,048
9,300	9,030	6,734	6,732	4,021	4,019
6,859	6,985	2,958	2,895	8,639	8,369





ANSWER KEY

Add the money to find out how much it costs an adult to vacation in each place.

Vanuatu \$1,000 \$100 \$100 \$100 \$100 \$20 Costs \$ <u>1420</u>	Fiji \$1,000 \$100 \$50 \$100 \$20 \$10 Costs \$ <u>1280</u>	New Zealand \$1,000 \$20 \$100 \$5 \$2 \$1 \$10 Costs \$ <u>1138</u>	Hong Kong \$1,000 \$100 \$1,000 \$100 \$20 \$100 Costs \$ <u>2320</u>	London \$1,000 \$100 \$1,000 \$100 \$1,000 \$50 Costs \$ <u>3250</u>
New York \$1,000 \$20 \$1,000 \$20 \$50 \$10 	Hawaii \$1,000 \$1,000 \$1,000 \$100 \$1,000 \$10 	Greece \$1,000 \$100 \$1,000 \$100 \$50 \$100 	Japan \$1,000 \$5 \$1,000 \$20 \$1,000 \$100 	Bali \$1,000 \$100 \$100 \$50 \$100 \$2 \$2



PREVIEW

Please [Sign In](#) or [Sign Up](#) to download the printable version of this worksheet

$3,500 > 3,400$

$5,600 < 6,500$

$1,200 < 1,500$

$9,850 > 4,320$

$2,340 < 2,430$

$6,260 > 5,990$

$7,324 > 1,854$

$1,965 < 2,005$

$6,927 > 6,827$

$3,401 > 3,104$

$6,832 < 6,932$

$5,647 < 5,648$

$8,193 < 8,391$

$4,438 > 4,428$

$6,823 < 8,623$

$4,682 > 4,268$

$1,984 > 1,981$

$6,774 < 7,674$

$1,485 < 1,584$

$8,062 < 8,162$

$7,948 > 7,048$

$9,300 > 9,030$

$6,734 > 6,732$

$4,021 > 4,019$

$6,859 < 6,985$

$2,958 > 2,895$

$8,639 > 8,369$

