



Name \_\_\_\_\_ Class \_\_\_\_\_ Date \_\_\_\_\_

1 What is the **volume** of the cylinder shown?

$$V = \pi r^2 h \quad \pi = 3.14$$

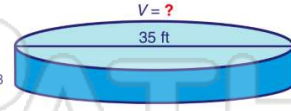
- A 678.24 cm<sup>3</sup>
- B 2,034.72 cm<sup>3</sup>
- C 6,104.16 cm<sup>3</sup>
- D 8,138.88 cm<sup>3</sup>



2 An above ground **4 ft** pool has a diameter of **35 ft**. What is the **volume** of the pool?

$$V = \pi r^2 h \quad \pi = 3.14$$

- A 439.6 ft<sup>3</sup>
- B 879.2 ft<sup>3</sup>
- C 3,846.5 ft<sup>3</sup>
- D 15,386 ft<sup>3</sup>



3 A can of tennis balls is **21.5 cm** tall and has a radius of **3.5 cm**. What is the **volume** of the can?

$$V = \pi r^2 h \quad \pi = 3.14$$



4 The volume of the cylinder shown is **5,837.26 cm<sup>3</sup>**. If the height is **11 cm**, what is the **radius** of the cylinder?

$$V = \pi r^2 h \quad \pi = 3.14 \quad V = 5,837.26 \text{ cm}^3$$



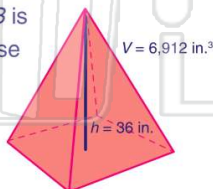
## PREVIEW

Please [Sign In](#) or [Sign Up](#) to download the printable version of this worksheet

9 The pyramid shown has a **volume** of **6,912 in.<sup>3</sup>**. How long is the **base**?

$$V = \frac{1}{3} Bh, \text{ where } B \text{ is the area of the base}$$

- A 4 in.
- B 16 in.
- C 24 in.
- D 48 in.



10 A pyramid has a volume of **8,019 cm<sup>3</sup>** and a base with sides of **27 cm**.

$$V = \frac{1}{3} Bh, \text{ where } B \text{ is the area of the base}$$

- A 33 cm
- B 35 cm
- C 36 cm
- D 37 cm


the base

- A 220 in.<sup>3</sup>
- B 968 in.<sup>3</sup>
- C 1,210 in.<sup>3</sup>
- D 5,760 in.<sup>3</sup>



Name \_\_\_\_\_ Class \_\_\_\_\_ Date \_\_\_\_\_

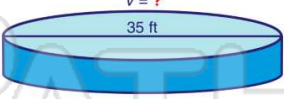
1 What is the **volume** of the cylinder shown?  
 $V = \pi r^2 h$   $\pi = 3.14$



A 678.24 cm<sup>3</sup>  
 B 2,034.72 cm<sup>3</sup>  
 C 6,104.16 cm<sup>3</sup>  
 D 8,138.88 cm<sup>3</sup>

(B)


2 An above ground **4 ft** pool has a diameter of **35 ft**. What is the **volume** of the pool?  
 $V = \pi r^2 h$   $\pi = 3.14$



A 439.6 ft<sup>3</sup>  
 B 879.2 ft<sup>3</sup>  
 C 3,846.5 ft<sup>3</sup>  
 D 15,386 ft<sup>3</sup>

(C)

3 A can of tennis balls is **21.5 cm** tall and has a radius of **3.5 cm**. What is the **volume** of the can?  
 $V = \pi r^2 h$   $\pi = 3.14$



(B)

4 The volume of the cylinder shown is **5,837.26 cm<sup>3</sup>**. If the height is **11 cm**, what is the **radius** of the cylinder?  
 $V = \pi r^2 h$   $\pi = 3.14$   $V = 5,837.26 \text{ cm}^3$

(A)



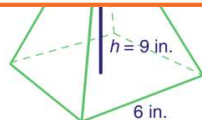
(A)

## PREVIEW

7 Please [Sign In](#) or [Sign Up](#) to download the printable version of this worksheet

(C)

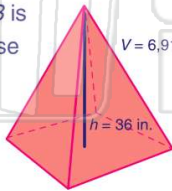
- A 36 in.<sup>3</sup>  
 B 108 in.<sup>3</sup>  
 C 324 in.<sup>3</sup>  
 D 432 in.<sup>3</sup>



the base

- A 220 in.<sup>3</sup>      C 1,210 in.<sup>3</sup>  
 B 968 in.<sup>3</sup>      D 5,760 in.<sup>3</sup>

9 The pyramid shown has a **volume** of **6,912 in.<sup>3</sup>**. How long is the **base**?  
 $V = \frac{1}{3} Bh$ , where  $B$  is the area of the base



A 4 in.  
 B 16 in.  
 C 24 in.  
 D 48 in.

(C)

10 A pyramid has a volume of **8,019 cm<sup>3</sup>** and a base with sides of **27 cm**. What is the **height** of the pyramid?  
 $V = \frac{1}{3} Bh$ , where  $B$  is the area of the base

A 33 cm      C 36 cm  
 B 35 cm      D 37 cm

(A)