



Nonlinear Functions & Set Theory

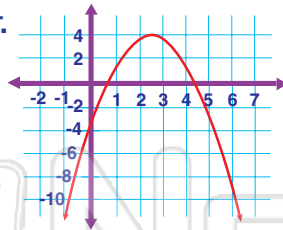
Math

Name _____ Class _____ Date _____

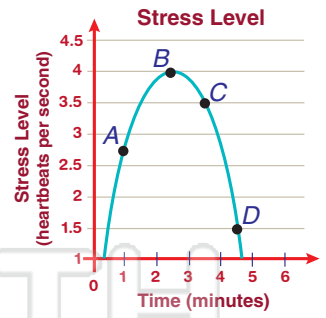
1 The graph shown is what **type of function**?

Circle the answer letter.

- a. linear
- b. nonlinear
- c. exponential

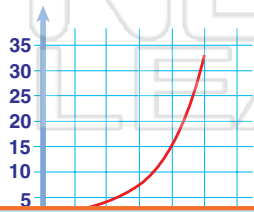


6 Dwayne is taking a test. Based on the graph shown, when is his **stress** about the test at the **lowest level**?



2 The graph shown is what **type of function**?

- a. linear
- b. nonlinear



7 A set is a collection of objects called elements. If set $A = \{x > 45\}$, which number is **not in the set**? Cross it out.

3



PREVIEW

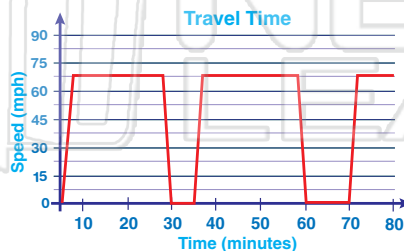
4

Please [Sign In](#) or [Sign Up](#) to download the printable version of this worksheet

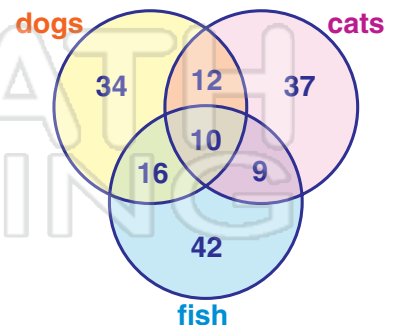
c. 0, 4, 16

5 According to the graph that represents Linda's drive to her son's house, **how many rest stops** did she take before arriving at his house?

- a. 2
- b. 3
- c. 65



10 According to the Venn diagram, **how many people own a cat?**



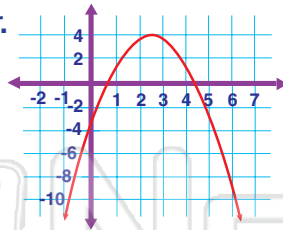


Name _____ Class _____ Date _____

1 The graph shown is what **type of function**?

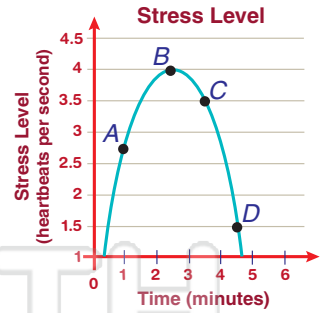
Circle the answer letter.

- a. linear
- b. nonlinear**
- c. exponential



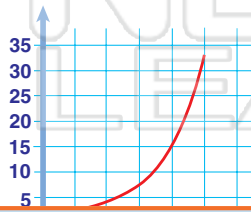
6 Dwayne is taking a test. Based on the graph shown, when is his **stress** about the test at the **lowest level**?

point D



2 The graph shown is what **type of function**?

- a. linear
- b. nonlinear**



7 A set is a collection of objects called elements. If set $A = \{x > 45\}$, which number is **not in the set**? Cross it out.

3



PREVIEW

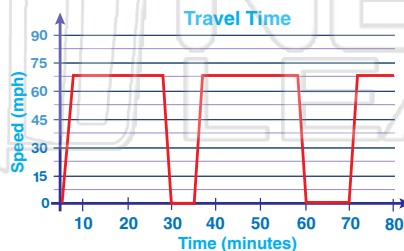
Please [Sign In](#) or [Sign Up](#) to download the printable version of this worksheet

4

- c. 0, 4, 16

5 According to the graph that represents Linda's drive to her son's house, **how many rest stops** did she take before arriving at his house?

- a. 2**
- b. 3
- c. 65



10 According to the Venn diagram, **how many people own a cat?**

$$12 + 37 + 9 + 10 = 68$$

