



Name \_\_\_\_\_ Class \_\_\_\_\_ Date \_\_\_\_\_

1 To solve a **system of equations** means to solve two equations for an ordered pair that make both equations true.

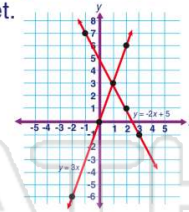
True or false?

- A true
- B false

2 The graph shown represents the equations,  $y = 3x$  and  $y = -2x + 5$  and their solution set.

True or false?

- A true
- B false



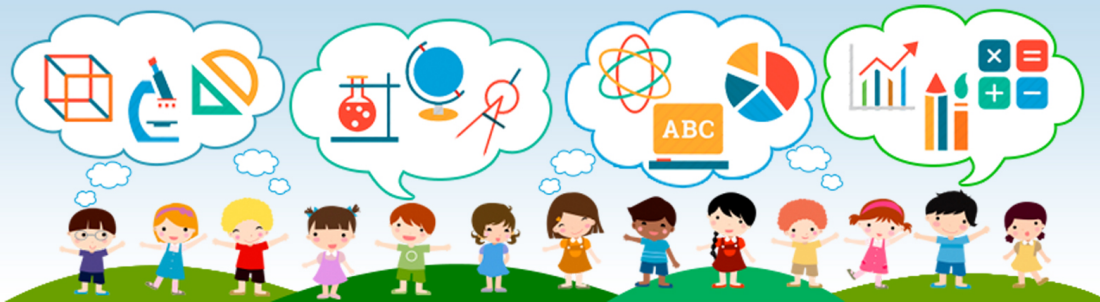
3 What is the solution set for the system of equations,  $y = 4x$  and  $2x + y = 12$ , by using **algebraic substitution**?

- A (6, 24)

4 What is the solution set for the system of equations,  $y = -2x$  and  $5x - y = -14$ , by using **algebraic substitution**?

- A (-2, 4)

5



## PREVIEW

Please [Sign In](#) or [Sign Up](#) to download the printable version of this worksheet

7

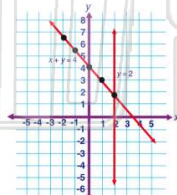
- A  $(\frac{1}{2}, 3)$
- B (1, 1)
- C (-1, 2)
- D (2, 4)

- B (5, 0)
- C (1, 10)
- D (6, -3)

9 The graph shown represents the equations,  $y = 2$  and  $x + y = 4$ , and their solution set correctly.

True or false?

- A true
- B false



10 EZ Rental charges an initial fee of \$59 and a per day fee of \$40. Careful Car Rental charges an initial fee of \$79 and a per day fee of \$30. At how many days is the fee the same for both companies?

- A 2
- B 3
- C 4
- D 5



Name \_\_\_\_\_ Class \_\_\_\_\_ Date \_\_\_\_\_

1 To solve a **system of equations** means to solve two equations for an ordered pair that make both equations true.

True or false?

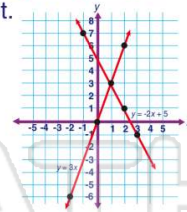
- A true
- B false

(A)

2 The graph shown represents the equations,  $y = 3x$  and  $y = -2x + 5$  and their solution set.

True or false?

- A true
- B false



(A)

3 What is the solution set for the system of equations,  $y = 4x$  and  $2x + y = 12$ , by using **algebraic substitution**?

A (6, 24)

(C)

4 What is the solution set for the system of equations,  $y = -2x$  and  $5x - y = -14$ , by using **algebraic substitution**?

A (-2, 4)

(A)

5



(B)

## PREVIEW

Please [Sign In](#) or [Sign Up](#) to download the printable version of this worksheet

7

A  $(\frac{1}{2}, 3)$

C (-1, 2)

B (5, 0)

C (1, 10)

B (1, 1)

D (2, 4)

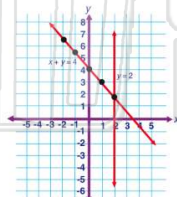
D (6, -3)

(A)

9 The graph shown represents the equations,  $y = 2$  and  $x + y = 4$ , and their solution set correctly.

True or false?

- A true
- B false



(B)

10 EZ Rental charges an initial fee of \$59 and a per day fee of \$40. Careful Car Rental charges an initial fee of \$79 and a per day fee of \$30. At how many days is the fee the same for both companies?

- A 2
- B 3

- C 4
- D 5

(A)