



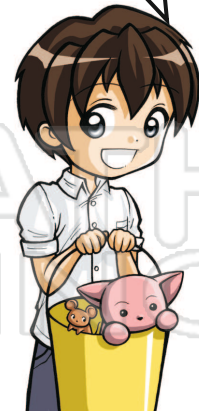
Name \_\_\_\_\_

Date \_\_\_\_\_

Write your names and draw the bottle you will measure with.

**YOU NEED:** water, buckets, 3 friends, different plastic bottles

How many bottles of water will fill the bucket?				
Names				
The bottles looked like this →				
I guessed				
I measured				



## PREVIEW

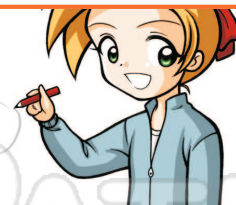
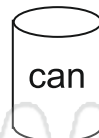
Please [Sign In](#) or [Sign Up](#) to download the printable version of this worksheet

Which one?

sand  or



to measure



Why? \_\_\_\_\_

Which one?

beads  or



to measure



Why? \_\_\_\_\_



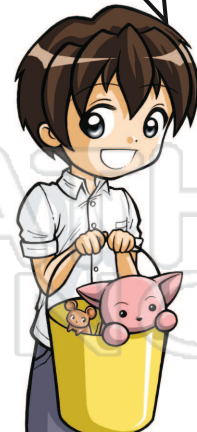
Name \_\_\_\_\_

Date \_\_\_\_\_

Write your names and draw the bottle you will measure with.

**YOU NEED:** water, buckets, 3 friends, different plastic bottles

How many bottles of water will fill the bucket?				
Names				
The bottles looked like this →				
I guessed				
I measured				

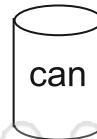


**PREVIEW**

Please [Sign In](#) or [Sign Up](#) to download the printable version of this worksheet

Which one?

sand  or  to measure



Why? Since the can is round, it would be easier to fill it with sand.

Blocks would not fill it completely.

Which one?

beads  or  to measure



Why? Since the storage bin isn't a real rectangle, it would be easier to

fill it with beads.