



Name _____ Class _____ Date _____

1 Equal amounts of heat energy are given off by 1.0-kilogram samples of aluminum, iron, platinum, and zinc, all initially at 100°C. Which sample has the greatest decrease in temperature?

- A aluminum
- B iron
- C platinum
- D zinc

2 While the water is boiling, what happens to the average kinetic energy of the water molecules? [Assume that the pressure remains constant.]

- A It decreases.
- B It increases.
- C It remains the same.



3 The amount of heat energy liberated by a sample of water depends upon its

A temperature change only

4 A pot of water is boiling. When a cook throws salt into the water, it stops boiling because the salt



PREVIEW

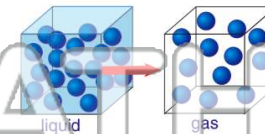
Please [Sign In](#) or [Sign Up](#) to download the printable version of this worksheet

7 information can be determined?

- A how much heat the objects contain
- B how much heat the warmer object can supply to the colder object
- C whether a heat exchange would take place if the objects were in contact
- D the total amount of energy the objects contain

points. Which of these metals requires the greatest amount of heat to change from the liquid to the gaseous phase?

- A aluminum
- B iron
- C platinum
- D copper



9 A 0.060 kilogram ice cube at 0.0°C is placed in a glass containing 0.250 kilogram of water at 25°C. Which statement describes this system when equilibrium is reached? (Assume no external exchange of heat.)

- A The ice is completely melted and the water temperature is above 0°C.
- B The ice is completely melted and the water temperature is 0°C.
- C Part of the ice remains frozen and the water temperature is above 0°C.
- D Part of the ice remains frozen and the water temperature is 0°C.



10 As 6.00 kilograms of liquid substance at its freezing point completely freezes, it gives off enough heat to melt 3.00 kilograms of ice at 0°C. The heat of fusion of the substance is

- A 2.05 kJ/kg
- B 4.19 kJ/kg
- C 167 kJ/kg
- D 668 kJ/kg





Name _____ Class _____ Date _____

1 Equal amounts of heat energy are given off by 1.0-kilogram samples of aluminum, iron, platinum, and zinc, all initially at 100°C. Which sample has the greatest decrease in temperature?

- A aluminum
- B iron
- C platinum
- D zinc

2 While the water is boiling, what happens to the average kinetic energy of the water molecules? [Assume that the pressure remains constant.]

- A It decreases.
- B It increases.
- C It remains the same.



3 The amount of heat energy liberated by a sample of water depends upon its

A temperature change only

4 A pot of water is boiling. When a cook throws salt into the water, it stops boiling because the salt



PREVIEW

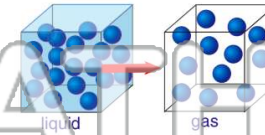
Please [Sign In](#) or [Sign Up](#) to download the printable version of this worksheet

7 information can be determined?

- A how much heat the objects contain
- B how much heat the warmer object can supply to the colder object
- C whether a heat exchange would take place if the objects were in contact
- D the total amount of energy the objects contain

points. Which of these metals requires the greatest amount of heat to change from the liquid to the gaseous phase?

- A aluminum
- B iron
- C platinum
- D copper



9 A 0.060 kilogram ice cube at 0.0°C is placed in a glass containing 0.250 kilogram of water at 25°C. Which statement describes this system when equilibrium is reached? (Assume no external exchange of heat.)

- A The ice is completely melted and the water temperature is above 0°C.
- B The ice is completely melted and the water temperature is 0°C.
- C Part of the ice remains frozen and the water temperature is above 0°C.
- D Part of the ice remains frozen and the water temperature is 0°C.



10 As 6.00 kilograms of liquid substance at its freezing point completely freezes, it gives off enough heat to melt 3.00 kilograms of ice at 0°C. The heat of fusion of the substance is

- A 2.05 kJ/kg
- B 4.19 kJ/kg
- C 167 kJ/kg
- D 668 kJ/kg

