



Name \_\_\_\_\_ Class \_\_\_\_\_ Date \_\_\_\_\_

1 **Electricity** gets from power plants to our homes, schools, and other buildings through

- A string
- B wind
- C computers
- D wires



2 Can **electricity travel** from one place to another?

- A yes
- B no



3 What do people **use electricity** for?



4 What needs **electricity** to work?

- A a TV



5



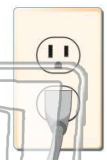
## PREVIEW

Please [Sign In](#) or [Sign Up](#) to download the printable version of this worksheet

7

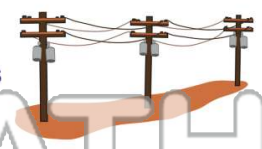
**never touch** an **electrical outlet** or plug.

- A never
- B sometimes
- C always
- D usually



stay **away** from **power lines** and **power** near **wires**.

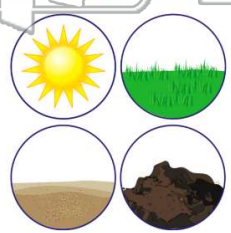
- A often
- B sometimes
- C always
- D never



9

What can be used to **create electricity**?

- A grass
- B sunlight
- C soil
- D sand



10

When **sunlight** is used to **create electricity**, it is called \_\_\_\_\_.

- A light rays
- B wind energy
- C moon energy
- D solar energy

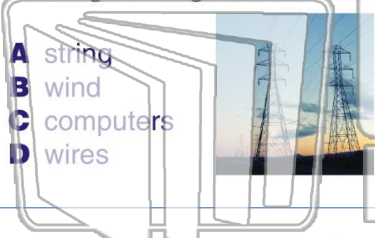




Name \_\_\_\_\_ Class \_\_\_\_\_ Date \_\_\_\_\_

1 **Electricity** gets from power plants to our homes, schools, and other buildings through

- A string
- B wind
- C computers
- D wires



2 Can **electricity travel** from one place to another?

- A yes
- B no



3 What do people **use electricity** for?



4 What needs **electricity** to work?

- A a TV



5



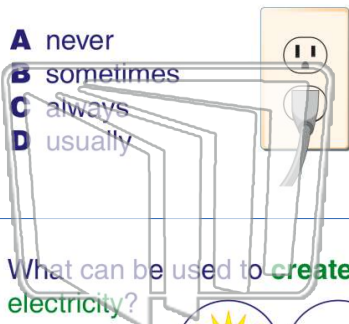
## PREVIEW

Please [Sign In](#) or [Sign Up](#) to download the printable version of this worksheet

7

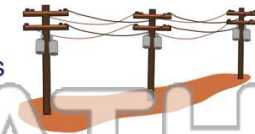
**touch** an **electrical** outlet or plug.

- A never
- B sometimes
- C always
- D usually



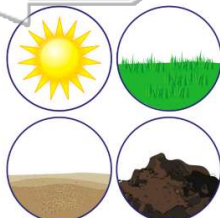
**near** wires.

- A often
- B sometimes
- C always
- D never



9 What can be used to **create** electricity?

- A grass
- B sunlight
- C soil
- D sand



10 When **sunlight** is used to **create** electricity, it is called \_\_\_\_\_.

- A light rays
- B wind energy
- C moon energy
- D solar energy

