



Name _____ Class _____ Date _____

1 Plants cannot grow in the **deepest parts of the ocean** because it is



- A too salty
- B too hot
- C too fishy
- D too dark

2 When you look at planet Earth, you can see that **there is more** than **land**.



- A water
- B sand
- C rocks
- D trees

3 A _____ is a **very dry** place.

4 The **desert** gets a lot of _____.



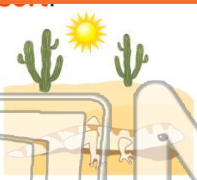
5

PREVIEW

Please [Sign In](#) or [Sign Up](#) to download the printable version of this worksheet

7 can live in the _____.

- A like it cold
- B like grass
- C do not need a lot of water
- D need a lot of water



animals. It **rains a lot** in this habitat. **What is this habitat?**

- A ocean
- B desert
- C rainforest
- D grassland



9 This habitat **covers most of the Earth**. This habitat is made up of **saltwater**. What is this **habitat**?

- A ocean
- B forest
- C wetland
- D desert



10 This habitat is made up of **land that is covered by water**. Many plants and animals live here. What is this **habitat**?

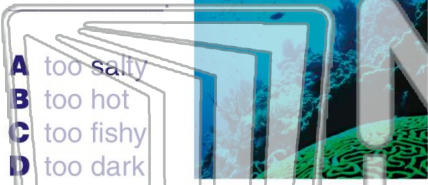
- A desert
- B forest
- C wetland
- D mountain





Name _____ Class _____ Date _____

1 Plants cannot grow in the **deepest parts of the ocean** because it is



- A too salty
- B too hot
- C too fishy
- D too dark

2 When you look at planet Earth, you can see that **there is more** than **land**.



- A water
- B sand
- C rocks
- D trees

3 A _____ is a **very dry** place.

4 The **desert** gets a lot of _____.



PREVIEW

Please [Sign In](#) or [Sign Up](#) to download the printable version of this worksheet

7 _____

- A like it cold
- B like grass
- C do not need a lot of water
- D need a lot of water



animals. It **rains a lot** in this habitat. **What is this habitat?**

- A ocean
- B desert
- C rainforest
- D grassland



9 This habitat **covers most of the Earth**. This habitat is made up of **saltwater**. What is this **habitat**?

- A ocean
- B forest
- C wetland
- D desert



10 This habitat is made up of **land that is covered by water**. Many plants and animals live here. What is this **habitat**?

- A desert
- B forest
- C wetland
- D mountain

