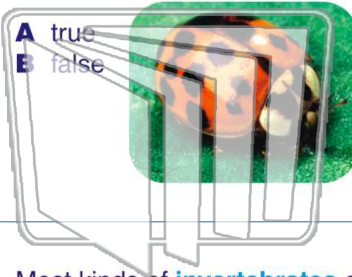




Name _____ Class _____ Date _____

1 Most animals living in the world today are **invertebrates**.

- A true
- B false



2 A _____ is an example of an **invertebrate**.

- A goldfish
- B spider
- C snake
- D salamander



3 Most kinds of **invertebrates** are _____, such as flies.

4 **Invertebrates** _____ grow as big as vertebrates are able to.



PREVIEW

Please [Sign In](#) or [Sign Up](#) to download the printable version of this worksheet

7 body can sting. **Where do most sea jellies live?**

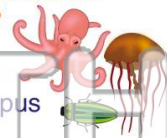
- A on land
- B in the ocean
- C in mud
- D underground



skeletons are on the outside of their bodies. Arthropods' bodies are made up of several parts and sections.

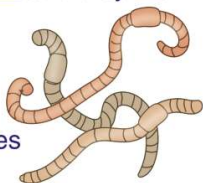
Which is an arthropod?

- A a beetle
- B jellyfish
- C a worm
- D an octopus



9 **Worms** are invertebrates. Worms do **not** _____ and they live underground.

- A breathe
- B like dirt
- C have soft bodies
- D have legs



10 **Mollusks** are invertebrates that have soft bodies. Many mollusks have shells to protect and support their soft bodies. **Which is an example of a mollusk?**

- A a fish
- B a tadpole
- C a snail
- D a turtle

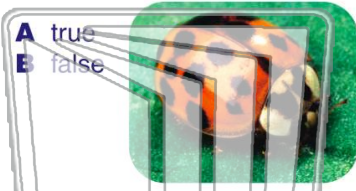




Name _____ Class _____ Date _____

1 Most animals living in the world today are **invertebrates**.

- A true
- B false



2 A _____ is an example of an **invertebrate**.

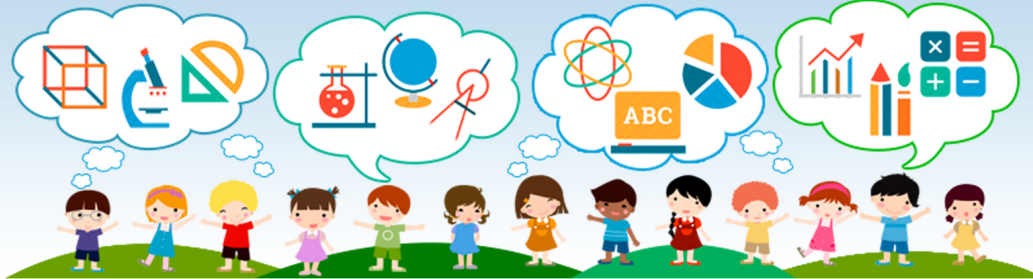
- A goldfish
- B spider
- C snake
- D salamander



3 Most kinds of **invertebrates** are _____, such as flies.

4 **Invertebrates** _____ grow as big as vertebrates are able to.

5



PREVIEW

Please [Sign In](#) or [Sign Up](#) to download the printable version of this worksheet

7

body can sting. **Where do most sea jellies live?**

- A on land
- B in the ocean
- C in mud
- D underground



skeletons are on the outside of their bodies. Arthropods' bodies are made up of several parts and sections.

Which is an arthropod?

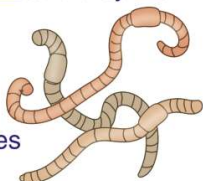
- A a beetle
- B jellyfish
- C a worm
- D an octopus



9

Worms are invertebrates. Worms do **not** _____ and they live underground.

- A breathe
- B like dirt
- C have soft bodies
- D have legs



10

Mollusks are invertebrates that have soft bodies. Many mollusks have shells to protect and support their soft bodies. **Which is an example of a mollusk?**

- A a fish
- B a tadpole
- C a snail
- D a turtle

