



# Animal Growth & Reproduction

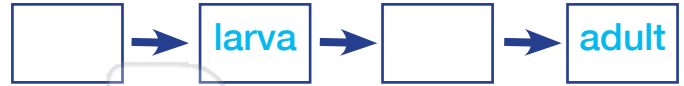
Sci  
D

Name \_\_\_\_\_ Class \_\_\_\_\_ Date \_\_\_\_\_

- 1 Organisms such as **mammals and birds** have **simple life cycles**; they look similar to their parents when they are born. Which of these organisms **looks similar to its parents when born**? Circle it.



- 6 Organisms that go through **complete metamorphosis** go through **four stages** of development. Complete the steps.



- 7 Label the stages of the **butterfly's life cycle**.



- 2 Many organisms have **complex life cycles** and **do not** look like their parents when they are born. **Cross out** the organism that **looks totally different from its parents when born**.

3  
T  
a  
c  
r



ive births,  
es develop

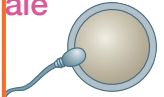


## PREVIEW

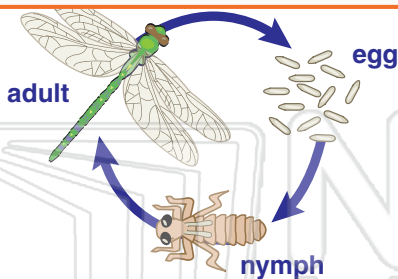
4  
T  
s

Please [Sign In](#) or [Sign Up](#) to download the printable version of this worksheet

ale



- 5 Give an **example** of an organism that goes through **complete metamorphosis**.



reproduction

metamorphosis

fertilization

germination

- 10 Circle the organism(s) that **lay eggs** instead of having live births.





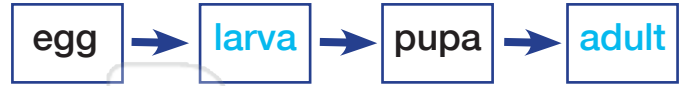
# Animal Growth & Reproduction - Answer Key

Name \_\_\_\_\_ Class \_\_\_\_\_ Date \_\_\_\_\_

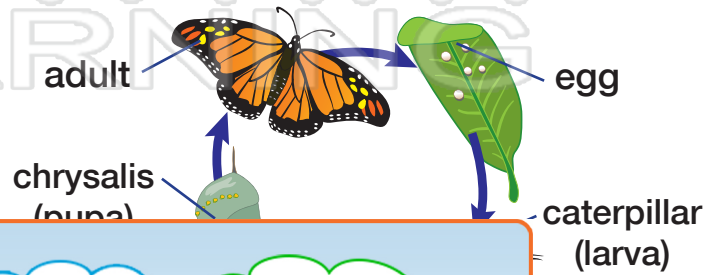
1 Organisms such as **mammals and birds** have **simple life cycles**; they look similar to their parents when they are born. Which of these organisms **looks similar to its parents when born**? Circle it.



6 Organisms that go through **complete metamorphosis** go through **four stages** of development. Complete the steps.



7 Label the stages of the **butterfly's life cycle**.



2 Many organisms have **complex life cycles** and **do not** look like their parents when they are born. **Cross out** the organism that **looks totally different from its parents when born**.



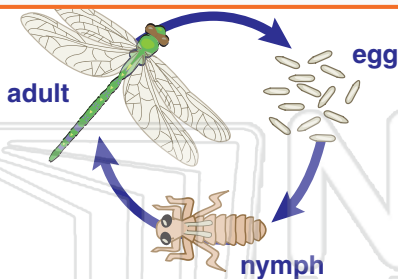
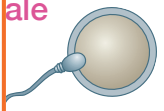
3 **live births, es develop**



## PREVIEW

Please [Sign In](#) or [Sign Up](#) to download the printable version of this worksheet

4 **ale**



reproduction      metamorphosis  
**fertilization**      germination

10 Circle the organism(s) that **lay eggs** instead of having live births.



5 Give an **example** of an organism that goes through **complete metamorphosis**.

open-ended