



Name _____ Class _____ Date _____

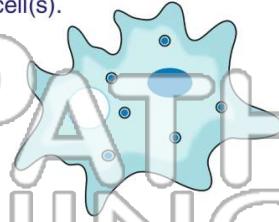
1 **Cells** are the **building blocks** of life. Which sentence supports this statement the best?

- A All cells are large.
- B All living things are made of cells.
- C You need a microscope to see cells.
- D Cells come in different shapes.



2 A **unicellular organism** is made up of _____ cell(s).

- A one
- B many
- C several
- D three



3 What is the difference between **unicellular** and **multicellular** organisms?

4 Which do scientists use to **study cells**?

- A a scale



5



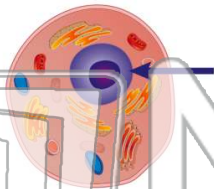
PREVIEW

Please [Sign In](#) or [Sign Up](#) to download the printable version of this worksheet

7

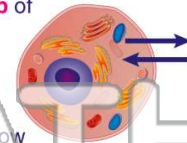
On the diagram of this **animal cell**.

- A cell wall
- B nucleus
- C cell membrane
- D cytoplasm



everything that comes in and out of the cell. What is the **main job** of the cell membrane?

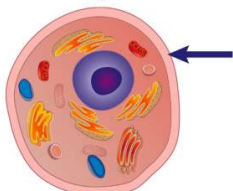
- A to move the cell
- B to feed the cell
- C to help the cell grow
- D to protect the inside of the cell



9

What part of the **animal cell** is the arrow pointing to on this diagram?

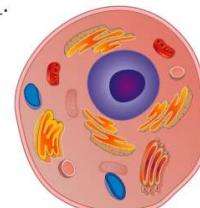
- A cell membrane
- B nucleus
- C cytoplasm
- D chloroplast



10

Every cell is filled with a **gel-like liquid** called _____.

- A jelly
- B slime
- C chloroplast
- D cytoplasm





Name _____ Class _____ Date _____

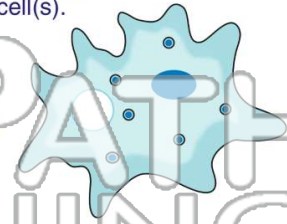
1 Cells are the **building blocks** of life. Which sentence supports this statement the best?

- A All cells are large.
- B All living things are made of cells.
- C You need a microscope to see cells.
- D Cells come in different shapes.



2 A **unicellular organism** is made up of _____ cell(s).

- A one
- B many
- C several
- D three



3 What is the difference between **unicellular** and **multicellular** organisms?

4 Which do scientists use to **study cells**?

- A a scale

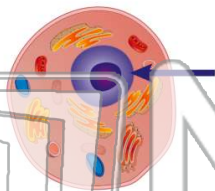


PREVIEW

Please [Sign In](#) or [Sign Up](#) to download the printable version of this worksheet

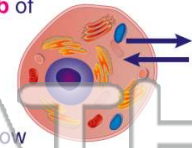
7 On the diagram of this **animal cell**.

- A cell wall
- B nucleus
- C cell membrane
- D cytoplasm



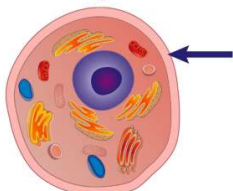
8 everything that comes in and out of the cell. What is the **main job** of the cell membrane?

- A to move the cell
- B to feed the cell
- C to help the cell grow
- D to protect the inside of the cell



9 What part of the **animal cell** is the arrow pointing to on this diagram?

- A cell membrane
- B nucleus
- C cytoplasm
- D chloroplast



10 Every cell is filled with a **gel-like liquid** called _____.

- A jelly
- B slime
- C chloroplast
- D cytoplasm

