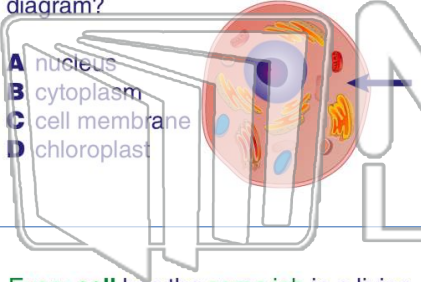




Name _____ Class _____ Date _____

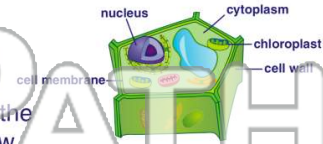
1 What part of the cell is the arrow pointing to on this **animal cell** diagram?

- A nucleus
- B cytoplasm
- C cell membrane
- D chloroplast



2 What is the **main job** of the **cytoplasm** in a cell?

- A to feed the cell
- B to help the cell grow
- C to help the cell move
- D to hold all cell parts in place



3 Every **cell** has the **same job** in a living organism.
True or false?



4 A **group** of one kind of **cell** is a _____.



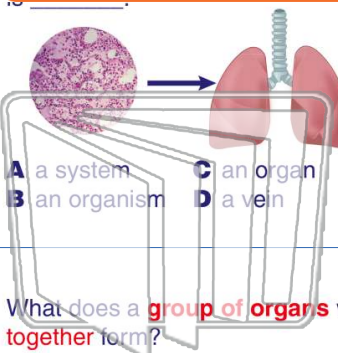
5



PREVIEW

Please [Sign In](#) or [Sign Up](#) to download the printable version of this worksheet

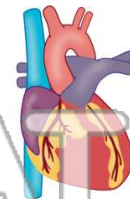
7



- A a system
- B an organism
- C an organ
- D a vein

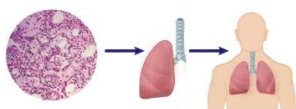
an **organ** in the human body.

- A a foot
- B a hand
- C a heart
- D a strand of hair



9 What does a **group of organs** working together form?

- A a system
- B blood
- C oxygen
- D a tissue



10 The _____ is an example of a **system** in the human body.

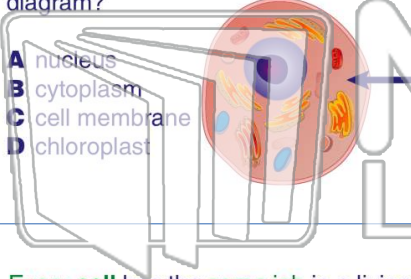
- A sleeping system
- B eating system
- C running system
- D respiratory system





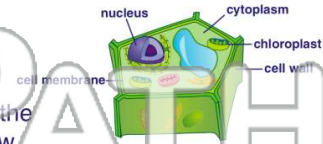
Name _____ Class _____ Date _____

1 What part of the cell is the arrow pointing to on this **animal cell** diagram?



- A nucleus
- B cytoplasm
- C cell membrane
- D chloroplast

2 What is the **main job** of the **cytoplasm** in a cell?



- A to feed the cell
- B to help the cell grow
- C to help the cell move
- D to hold all cell parts in place

3 Every **cell** has the **same job** in a living organism.
True or false?



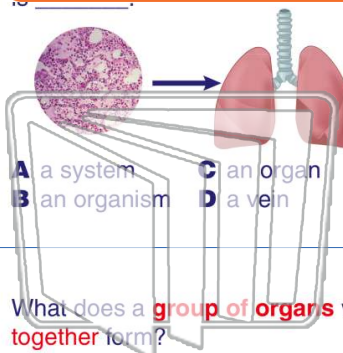
4 A **group** of one kind of **cell** is a _____.



PREVIEW

Please [Sign In](#) or [Sign Up](#) to download the printable version of this worksheet

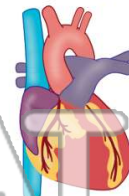
7 _____ is _____



- A a system
- B an organism
- C an organ
- D a vein

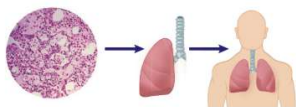
_____ is an **organ** in the human body.

- A a foot
- B a hand
- C a heart
- D a strand of hair



9 What does a **group of organs** working **together** form?

- A a system
- B blood
- C oxygen
- D a tissue



10 The _____ is an example of a **system** in the human body.

- A sleeping system
- B eating system
- C running system
- D respiratory system

