

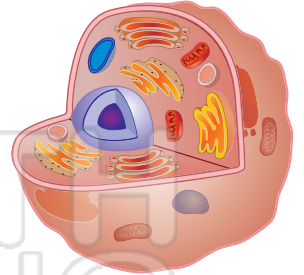


Name \_\_\_\_\_ Class \_\_\_\_\_ Date \_\_\_\_\_

1 Which **tool** do scientists use to **study cells**?  
Circle it.



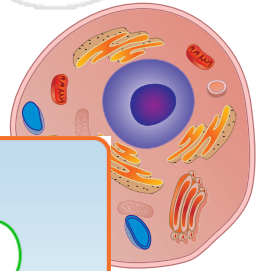
6 The cell \_\_\_\_\_  
**separates** the cell from everything outside the cell. It **guards** everything that comes **in and out** of the cell.



2 Circle the structures **both animal and plant cells** contain.

nucleus chloroplast

7 The \_\_\_\_\_  
tells all the cell parts what to do in order to \_\_\_\_\_



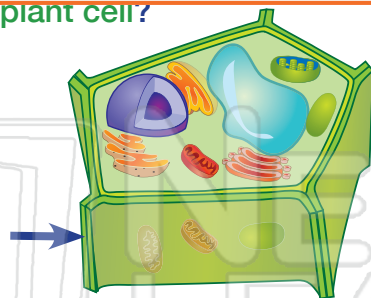
3 v  
th



## PREVIEW

Please [Sign In](#) or [Sign Up](#) to download the printable version of this worksheet

4 v  
this diagram of a **plant cell**? \_\_\_\_\_ called a **tissue**. True or false?



true false

5 Every cell is filled with a **gel-like liquid** called \_\_\_\_\_.

10 For an organism to **contain a tissue**, which needs to be **true**? Check it.

- The organism needs to be small.
- The organism needs to be moving.
- The organism needs to to have more than one type of cell.

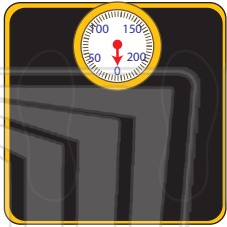
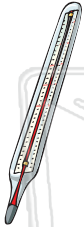


# Cells - Answer Key

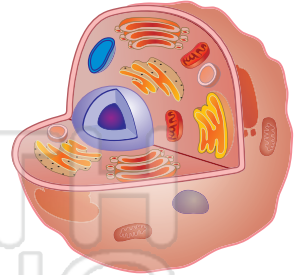
Sci  
D

Name \_\_\_\_\_ Class \_\_\_\_\_ Date \_\_\_\_\_

- 1 Which **tool** do scientists use to **study cells**?  
Circle it.



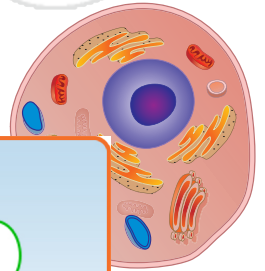
- 6 The cell \_\_\_\_\_ **membrane** \_\_\_\_\_  
**separates** the cell from everything  
outside the cell. It  
**guards** everything  
that comes **in and**  
**out** of the cell.



- 2 Circle the structures **both animal and plant cells** contain.

nucleus chloroplast

- 7 The \_\_\_\_\_ **nucleus** \_\_\_\_\_  
tells all the cell parts  
what to do in order to



- 3

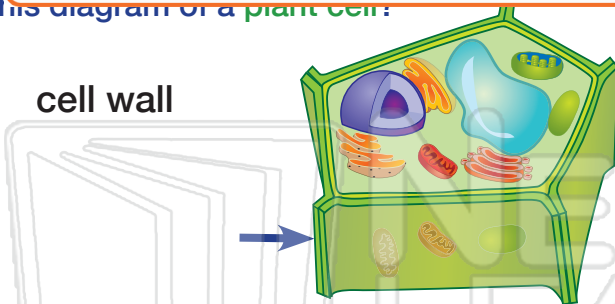


## PREVIEW

Please [Sign In](#) or [Sign Up](#) to download  
the printable version of this worksheet

- 4

cell wall



- 5 Every cell is filled with a **gel-like liquid**  
called \_\_\_\_\_ **cytoplasm** \_\_\_\_\_.

a **tissue**. True or false?

true

false

- 10 For an organism to **contain a tissue**,  
which needs to be **true**? Check it.

- The organism needs to be small.
- The organism needs to be moving.
- The organism needs to have  
more than one type of cell.