



Name _____ Class _____ Date _____

1

_____ of the earth's surface is covered by **water**.

- A One-third
- B Three-quarters
- C One-half
- D All



2

What is **freshwater**?

- A water containing a lot of salt
- B cold water containing fish
- C water containing only a small amount of salt
- D water in the ocean



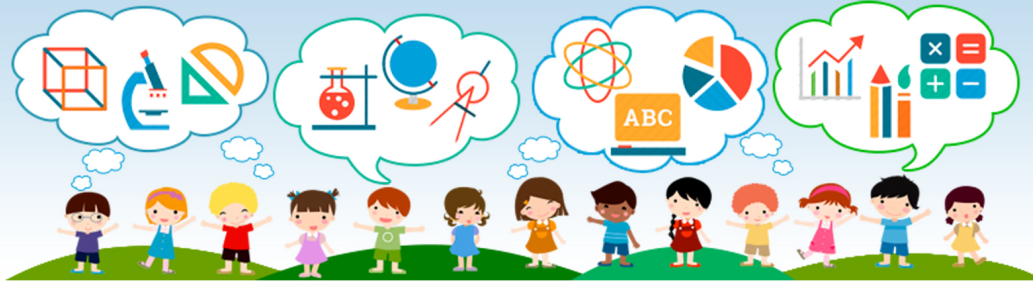
3

What percentage of water on earth is **usable freshwater** found in groundwater, lakes, rivers,

4

_____ is **freshwater beneath** the earth's surface.

5



PREVIEW

Please [Sign In](#) or [Sign Up](#) to download the printable version of this worksheet

7

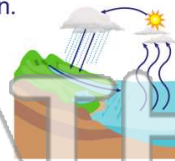
_____ to humans.

- A used to wash clothes and dishes
- B used to swim in
- C used for drinking and for watering crops
- D used to cool off with



movement of the earth's water from the earth's surface to the atmosphere and then back again.

- A rainfall amount
- B water cycle
- C humidity level
- D air pressure



9

Throughout the **water cycle**, water can be solid, liquid, or _____.

- A gas
- B ice
- C rain
- D snow



10

The **sun** powers the water cycle, because _____ is what keeps the cycle going.

- A cold
- B rain
- C heat
- D snow





Name _____ Class _____ Date _____

1 _____ of the earth's surface is covered by **water**.

- A One-third
- B Three-quarters
- C One-half
- D All



2 What is **freshwater**?

- A water containing a lot of salt
- B cold water containing fish
- C water containing only a small amount of salt
- D water in the ocean



3 What percentage of water on earth is **usable freshwater** found in groundwater, lakes, rivers,

4 _____ is **freshwater beneath** the earth's surface.

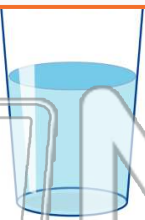


PREVIEW

Please [Sign In](#) or [Sign Up](#) to download the printable version of this worksheet

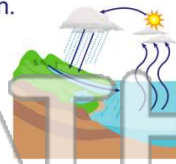
7 _____ to humans.

- A used to wash clothes and dishes
- B used to swim in
- C used for drinking and for watering crops
- D used to cool off with



8 _____ movement of the **earth's water** from the earth's surface to the atmosphere and then back again.

- A rainfall amount
- B water cycle
- C humidity level
- D air pressure



9 Throughout the **water cycle**, water can be solid, liquid, or _____.

- A gas
- B ice
- C rain
- D snow



10 The **sun powers** the water cycle, because _____ is what keeps the cycle going.

- A cold
- B rain
- C heat
- D snow

