



Name \_\_\_\_\_ Class \_\_\_\_\_ Date \_\_\_\_\_

1 \_\_\_\_\_ get energy by eating **dead matter**, like dead plants and animals.

- A Omnivores
- B Carnivores
- C Decomposers
- D Herbivores



2 Decomposers **break down** dead plants and animals into nutrients that are added back into the **soil**. What organisms then **use those important nutrients** to grow healthy and strong?

- A plants
- B hawks
- C humans
- D bears



3 \_\_\_\_\_ found in plants can be **passed along** from animal to animal through a **food chain**.

4 In a **food chain**, energy is **passed** by an animal eating

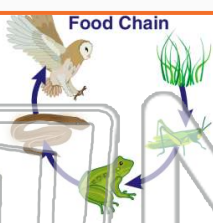


**PREVIEW**

Please [Sign In](#) or [Sign Up](#) to download the printable version of this worksheet

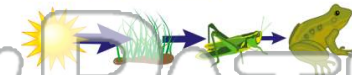
7 The arrows show the **transfer or flow** of \_\_\_\_\_ from one organism to the next.

- A energy
- B water
- C eggs
- D air



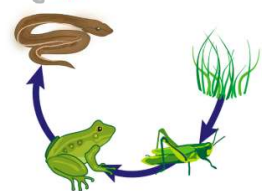
organism to organism along a food chain, the **amount of energy** becomes \_\_\_\_\_.

- A uncontrollable
- B more noticeable
- C greater
- D less and less



9 Which **consumer** is getting the **most** amount of **energy** in its meal?

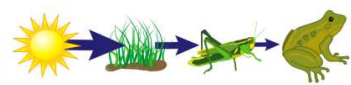
- A grass
- B frog
- C insect
- D snake



10 The **more** links on the food chain, the **more energy** each animal gets along the way.

True or false?

- A true
- B false





Name \_\_\_\_\_ Class \_\_\_\_\_ Date \_\_\_\_\_

1 \_\_\_\_\_ get energy by eating **dead matter**, like dead plants and animals.

- A Omnivores
- B Carnivores
- C Decomposers
- D Herbivores



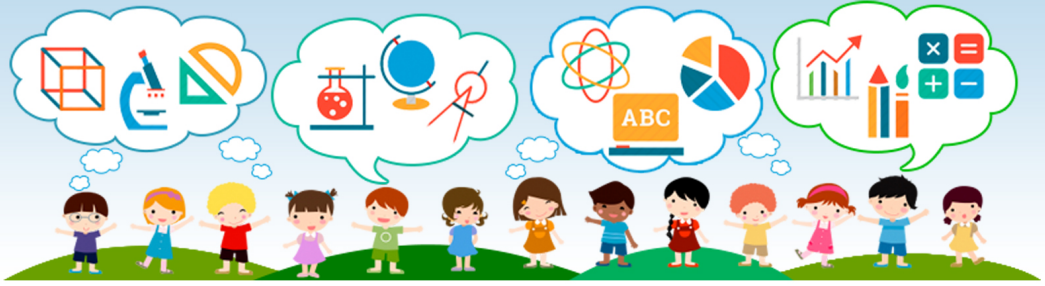
2 Decomposers **break down** dead plants and animals into nutrients that are added back into the **soil**. What organisms then **use those important nutrients** to grow healthy and strong?

- A plants
- B hawks
- C humans
- D bears



3 \_\_\_\_\_ found in plants can be **passed along** from animal to animal through a **food chain**.

4 In a **food chain**, energy is **passed** by an animal eating

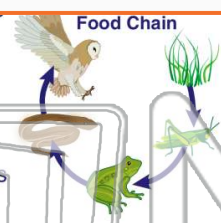


## PREVIEW

Please [Sign In](#) or [Sign Up](#) to download the printable version of this worksheet

7 The arrows show the **transfer or flow** of \_\_\_\_\_ from one organism to the next.

- A energy
- B water
- C eggs
- D air



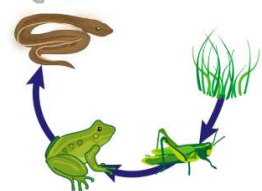
organism to organism along a food chain, the **amount of energy** becomes \_\_\_\_\_.

- A uncontrollable
- B more noticeable
- C greater
- D less and less



9 Which **consumer** is getting the **most** amount of **energy** in its meal?

- A grass
- B frog
- C insect
- D snake



10 The **more** links on the food chain, the **more energy** each animal gets along the way.

True or false?

- A true
- B false

