



Name _____ Class _____ Date _____

1 Animals have particular **body parts** and structures which help them **survive**; for example, tigers have **sharp teeth** in order to _____.

- A eat the meat of other animals
- B drink water
- C run fast
- D see well at night



2 Animals **need** certain things from their environment **in order to** live such as water, food, shelter, and _____.

- A trees
- B soil
- C oxygen
- D rocks



3 Ducks have **webbed feet** that help them **swim**. This sentence supports which of these statements?

4 Scientists classify animals into **two major groups**, _____.



PREVIEW

Please [Sign In](#) or [Sign Up](#) to download the printable version of this worksheet

7
A vertebrates
B invertebrates
C mammals
D land-dwelling animals



True or false?

- A true
- B false



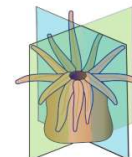
9 Organisms in the animal kingdom with **symmetry** exhibit either **radial symmetry** or _____.

- A color symmetry
- B side symmetry
- C round symmetry
- D bilateral symmetry



10 When a line can be drawn across an organism in **any way**, and divides it into **two equal parts**, this is called _____.

- A radial symmetry
- B bilateral symmetry
- C color symmetry
- D shape symmetry





Name _____ Class _____ Date _____

1

Animals have particular **body parts** and structures which help them **survive**; for example, tigers have **sharp teeth** in order to _____.

- A eat the meat of other animals
- B drink water
- C run fast
- D see well at night



2

Animals **need** certain things from their environment **in order to** live such as water, food, shelter, and _____.

- A trees
- B soil
- C oxygen
- D rocks



3

Ducks have **webbed feet** that help them **swim**. This sentence supports which of these statements?

4

Scientists classify animals into **two major groups**, _____.

5



PREVIEW

Please [Sign In](#) or [Sign Up](#) to download the printable version of this worksheet

7

- A vertebrates
- B invertebrates
- C mammals
- D land-dwelling animals



True or false?

- A true
- B false



9

Organisms in the animal kingdom with **symmetry** exhibit either **radial symmetry** or _____.

- A color symmetry
- B side symmetry
- C round symmetry
- D bilateral symmetry



10

When a line can be drawn across an organism in **any way**, and divides it into **two equal parts**, this is called _____.

- A radial symmetry
- B bilateral symmetry
- C color symmetry
- D shape symmetry

