



Name _____ Class _____ Date _____

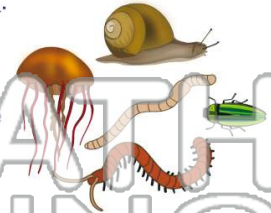
1 What are the **two** major groups of **animal classification**?

- A vertebrates and mammals
- B vertebrates and invertebrates
- C invertebrates and insects
- D insects and animals



2 **Invertebrates** are animals that do **not** have _____.

- A wings
- B legs
- C a backbone
- D antennae



3 Many **invertebrates** do **not** have _____ body parts.



4 Scientists classify **invertebrates** into **broad groups** called _____ such as cnidarians, echinoderms, mollusks, and _____.

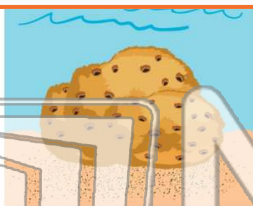


PREVIEW

Please [Sign In](#) or [Sign Up](#) to download the printable version of this worksheet

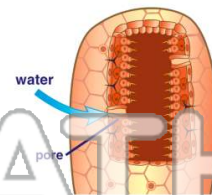
7 **Hydra** is a **cnidarian**.

- A true
- B false



its food.

- A an octopus
- B a fish
- C a sponge
- D a jellyfish



9 **Cnidarians** include **hydra**, **jellyfish**, and **sea anemones**. Cnidarians have several things in common with each other. What is one characteristic they have **in common**?

- A They live on dry land.
- B They have several eyes.
- C They have stinging cells.
- D They eat fish.



10 **Hydra**, a **cnidarian**, is an organism that lives in _____.

- A trees
- B mountains
- C saltwater
- D freshwater





Name _____ Class _____ Date _____

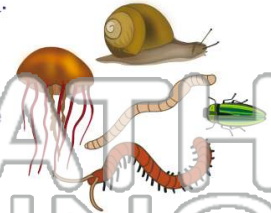
1 What are the **two** major groups of **animal classification**?

- A vertebrates and mammals
- B vertebrates and invertebrates
- C invertebrates and insects
- D insects and animals



2 **Invertebrates** are animals that do **not** have _____.

- A wings
- B legs
- C a backbone
- D antennae



3 Many **invertebrates** do **not** have _____ body parts.



4 Scientists classify **invertebrates** into **broad groups** called _____ such as cnidarians, echinoderms, mollusks, and _____.

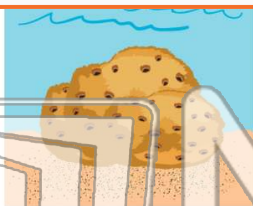


PREVIEW

Please [Sign In](#) or [Sign Up](#) to download the printable version of this worksheet

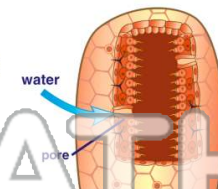
7 **True or false?**

- A true
- B false



its food.

- A an octopus
- B a fish
- C a sponge
- D a jellyfish



9 **Cnidarians** include **hydra**, **jellyfish**, and **sea anemones**. Cnidarians have several things in common with each other. What is one characteristic they have **in common**?

- A They live on dry land.
- B They have several eyes.
- C They have stinging cells.
- D They eat fish.



10 **Hydra**, a **cnidarian**, is an organism that lives in _____.

- A trees
- B mountains
- C saltwater
- D freshwater

