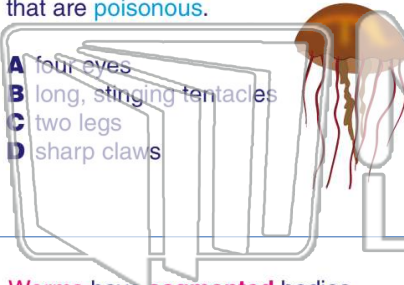




Name _____ Class _____ Date _____

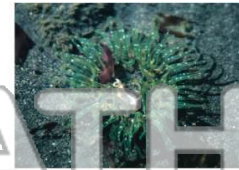
1 **Jellyfish** are a type of **cnidarian**. They have soft bodies and _____ that are **poisonous**.

- A four eyes
- B long, stinging tentacles
- C two legs
- D sharp claws



2 **Sea anemones** look like **flowers** in the sea and live _____.

- A attached to objects in the sea
- B by swimming in the ocean
- C on the surface of the ocean
- D separated from everything in the ocean



3 **Worms** have **segmented** bodies. What does **segmented** mean?

4 One type of **flatworm** is called a **tapeworm**. A tapeworm is a type of worm that lives off _____.

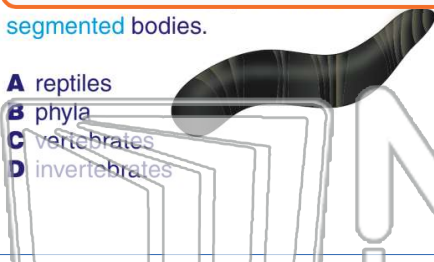


PREVIEW

Please [Sign In](#) or [Sign Up](#) to download the printable version of this worksheet

7 _____ **segmented** bodies.

- A reptiles
- B phyla
- C vertebrates
- D invertebrates



mollusks have _____.

- A shells
- B claws
- C many eyes
- D legs



9 **Mollusks** move by using a structure called a **foot**, which produces **slime**. What is one benefit of this **slime** the snail produces?

- A scares off prey
- B lowers snail's body temperature
- C provides snail with food
- D helps the snail move more easily



10 **Echinoderms** are invertebrates that show **radial symmetry**. Sea urchins and _____ are types of echinoderms.

- A starfish
- B fish
- C turtles
- D whales





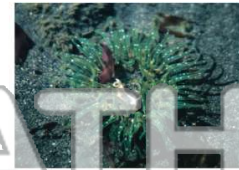
Name _____ Class _____ Date _____

1 Jellyfish are a type of **cnidarian**. They have soft bodies and _____ that are **poisonous**.



- A four eyes
- B long, stinging tentacles
- C two legs
- D sharp claws

2 **Sea anemones** look like **flowers** in the sea and live _____.



- A attached to objects in the sea
- B by swimming in the ocean
- C on the surface of the ocean
- D separated from everything in the ocean

3 Worms have **segmented** bodies. What does **segmented** mean?

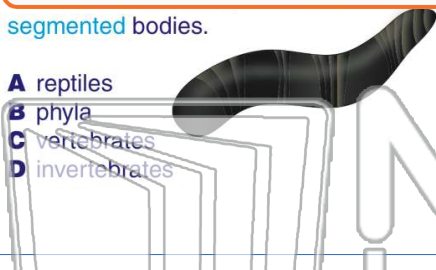
4 One type of **flatworm** is called a **tapeworm**. A tapeworm is a type of worm that lives off _____.



PREVIEW

Please [Sign In](#) or [Sign Up](#) to download the printable version of this worksheet

7 _____ segmented bodies.



- A reptiles
- B phyla
- C vertebrates
- D invertebrates

mollusks have _____.



- A shells
- B claws
- C many eyes
- D legs

9 **Mollusks** move by using a structure called a **foot**, which produces **slime**. What is one benefit of this **slime** the snail produces?



- A scares off prey
- B lowers snail's body temperature
- C provides snail with food
- D helps the snail move more easily

10 **Echinoderms** are invertebrates that show **radial symmetry**. Sea urchins and _____ are types of echinoderms.



- A starfish
- B fish
- C turtles
- D whales