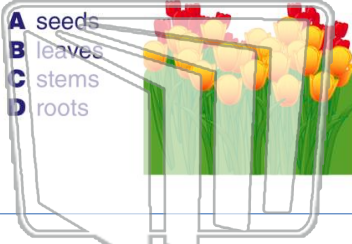




Name \_\_\_\_\_ Class \_\_\_\_\_ Date \_\_\_\_\_

1 Many plants produce \_\_\_\_\_ in order to **reproduce** or **make new plants**.



- A seeds
- B leaves
- C stems
- D roots

2 What part of the plant **produces seeds**?

- A leaves
- B roots
- C stem
- D flower



3 What is the **female organ** of a flower?

- A pollen



4 The **pistil** of a flower produces \_\_\_\_\_ needed for **plant reproduction**.

5



## PREVIEW

Please [Sign In](#) or [Sign Up](#) to download the printable version of this worksheet

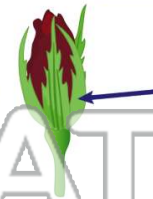
7

- A to grow larger
- B to catch water
- C to attract bees, butterflies, and birds
- D to take in oxygen



any leaves, protect the \_\_\_\_\_.

- A leaf
- B stem
- C flower bud
- D roots



9 **Pollen** needs to be **transferred** from one flower's stamen to \_\_\_\_\_ in order for plant **reproduction** to occur.

- A the stem
- B the pistil
- C the petal
- D the leaf



10 \_\_\_\_\_ is the **sweet liquid** produced by flowers to **attract** insects and birds.

- A Nectar
- B Pollen
- C Sap
- D Water

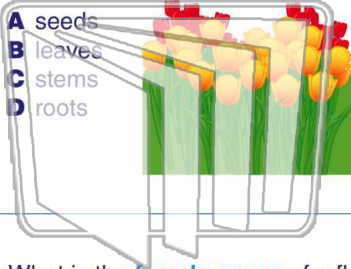




Name \_\_\_\_\_ Class \_\_\_\_\_ Date \_\_\_\_\_

1 Many plants produce \_\_\_\_\_ in order to **reproduce** or **make new plants**.

- A seeds
- B leaves
- C stems
- D roots



2 What part of the plant **produces seeds**?

- A leaves
- B roots
- C stem
- D flower



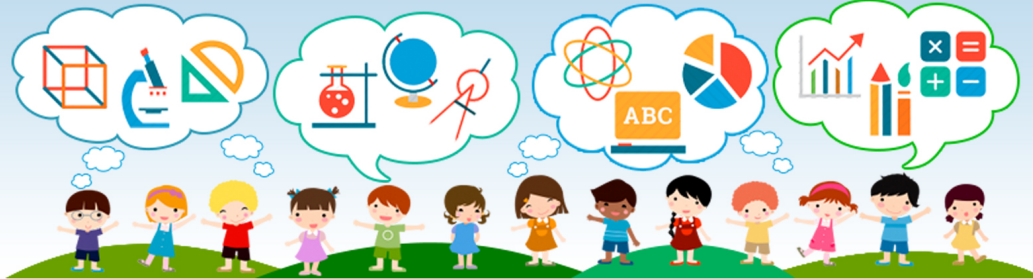
3 What is the **female organ** of a flower?

- A pollen



4 The **pistil** of a flower produces \_\_\_\_\_ needed for **plant reproduction**.

5



## PREVIEW

Please [Sign In](#) or [Sign Up](#) to download the printable version of this worksheet

7

- A to grow larger
- B to catch water
- C to attract bees, butterflies, and birds
- D to take in oxygen



any leaves, protect the \_\_\_\_\_.

- A leaf
- B stem
- C flower bud
- D roots



9 **Pollen** needs to be **transferred** from one flower's stamen to \_\_\_\_\_ in order for plant **reproduction** to occur.

- A the stem
- B the pistil
- C the petal
- D the leaf



10 \_\_\_\_\_ is the **sweet liquid** produced by flowers to **attract** insects and birds.

- A Nectar
- B Pollen
- C Sap
- D Water

