



Name \_\_\_\_\_ Class \_\_\_\_\_ Date \_\_\_\_\_

1 Amphibians spend part of their lives in **water** and part of their lives on **land**; therefore amphibians \_\_\_\_\_.

- A have live births
- B are warm-blooded
- C prefer the water over land
- D breathe with gills and lungs sometime during their lifetime



2 Amphibians are **warm-blooded**. True or false?

- A true
- B false



3 **Amphibians** \_\_\_\_\_ rather than having live births.



4 **Reptiles** are animals that have **bodies** covered in \_\_\_\_\_.



5

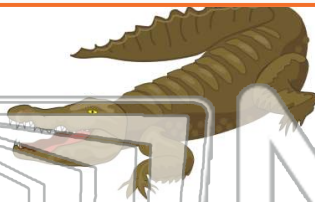


## PREVIEW

Please [Sign In](#) or [Sign Up](#) to download the printable version of this worksheet

7

- A gills
- B lungs
- C scales
- D eyes



- A lungs
- B gills
- C feathers
- D eyes



9 What is the **most common feature** birds have that other vertebrates **do not**?

- A limbs
- B nose
- C eyes
- D feathers



10 **Birds**

- A live in water
- B have live births
- C lay eggs
- D have scales






Name \_\_\_\_\_ Class \_\_\_\_\_ Date \_\_\_\_\_

1 Amphibians spend part of their lives in **water** and part of their lives on **land**; therefore amphibians \_\_\_\_\_.

A have live births  
B are warm-blooded  
C prefer the water over land  
D breathe with gills and lungs sometime during their lifetime



2 Amphibians are **warm-blooded**. True or false?


A true  
B false



3 **Amphibians** \_\_\_\_\_ rather than having live births.



4 **Reptiles** are animals that have **bodies** covered in \_\_\_\_\_.



5



**PREVIEW**

Please [Sign In](#) or [Sign Up](#) to download the printable version of this worksheet


7

A gills  
B lungs  
C scales  
D eyes




8

A lungs  
B gills  
C feathers  
D eyes



9 What is the **most common feature** birds have that other vertebrates **do not**?

A limbs  
B nose  
C eyes  
D feathers



10 **Birds**

A live in water  
B have live births  
C lay eggs  
D have scales

