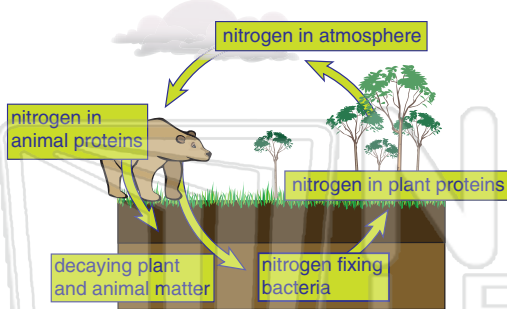




Name _____ Class _____ Date _____

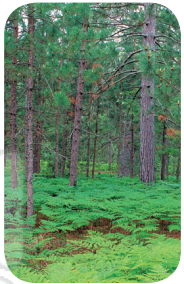
1 What do the **arrows** represent in this **nitrogen cycle** chart?



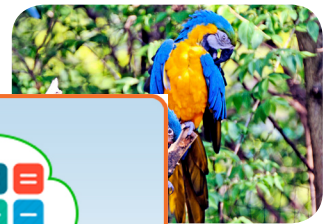
- a. release of nitrogen
- b. exchange of nitrogen for oxygen
- c. evaporation of nitrogen

6 If a large number of plants and trees were **taken out of an ecosystem**, which **gas** would **decrease**? Circle it.

- nitrogen
- carbon dioxide
- oxygen
- carbon



7 A _____ a **large ecosystem** with plant life and other organisms



2

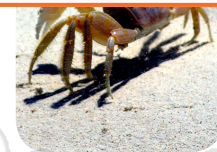
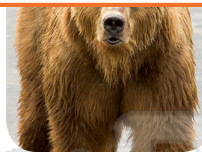


PREVIEW

Please [Sign In](#) or [Sign Up](#) to download the printable version of this worksheet

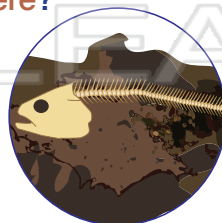
4 Circle the **process** that results in the **release of carbon dioxide** into the atmosphere.

- decaying
- photosynthesis
- respiration



5 When animals **die and decompose**, what is **released** into the **atmosphere**?

- a. oxygen
- b. water
- c. methane gas and carbon dioxide



10 Why do very **few plants** grow in a **tundra biome**?

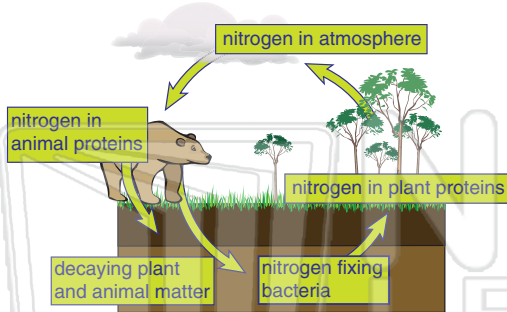
- a. The climate is too dry.
- b. The climate is too warm.
- c. The soil is frozen most of the year.





Name _____ Class _____ Date _____

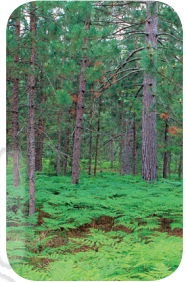
1 What do the **arrows** represent in this **nitrogen cycle** chart?



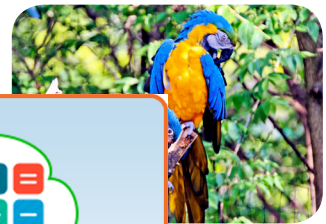
- a. release of nitrogen
- b. exchange of nitrogen for oxygen
- c. evaporation of nitrogen

6 If a large number of plants and trees were **taken out of an ecosystem**, which **gas** would **decrease**? Circle it.

nitrogen carbon dioxide
 oxygen carbon



7 A _____ biome _____ a large ecosystem with plant life and other organisms



2

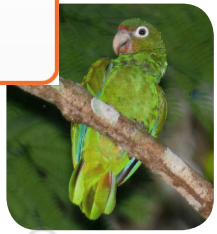


PREVIEW

Please [Sign In](#) or [Sign Up](#) to download the printable version of this worksheet

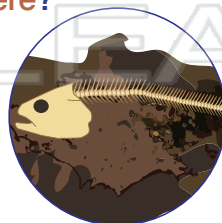
4 Circle the **process** that results in the **release of carbon dioxide** into the atmosphere.

decaying photosynthesis respiration



5 When animals **die and decompose**, what is **released** into the **atmosphere**?

- a. oxygen
- b. water
- c. methane gas and carbon dioxide



10 Why do very **few plants** grow in a **tundra biome**?

- a. The climate is too dry.
- b. The climate is too warm.
- c. The soil is frozen most of the year.

