



Name \_\_\_\_\_ Class \_\_\_\_\_ Date \_\_\_\_\_

1 Scientists have a **system to avoid confusion** when they are talking about plants, animals, and other living things. They do this by \_\_\_\_\_.

- A leaving out some plants
- B leaving out some animals
- C classifying plants and animals
- D only talking about invertebrates

2 **Carolus Linnaeus** first developed a classification system for living things in the 1750's. **How did he choose to classify living organisms?**

- A by their color
- B by their structures and characteristics
- C by their size
- D by their sight



3 The **6-kingdom classification system** is organized in order as: kingdom, phylum, class, order, \_\_\_\_\_,

4 A **kingdom** is the largest group of organisms. **What is the smallest, most specific group**



## PREVIEW

Please [Sign In](#) or [Sign Up](#) to download the printable version of this worksheet

7 **Plants** have \_\_\_\_\_.

- A cells with a nucleus
- B cells without a nucleus
- C cells with two nuclei
- D some cells with and some cells without a nucleus



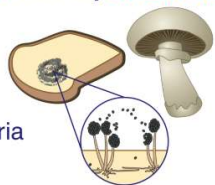
**Animals** cannot \_\_\_\_\_.

- A run
- B take in oxygen
- C make their own food
- D produce offspring



9 Organisms in the \_\_\_\_\_ Kingdom are mostly **multicellular**, their cells have a **nucleus**, and they **obtain their own food**.

- A Plants
- B Fungi
- C Archaeobacteria
- D Eubacteria



10 Mason was walking in the woods and happened to see some mushrooms on the ground. **Mushrooms** belong in the \_\_\_\_\_ Kingdom.

- A Archaeobacteria
- B Plant
- C Fungi
- D Protists





Name \_\_\_\_\_ Class \_\_\_\_\_ Date \_\_\_\_\_

1 Scientists have a **system to avoid confusion** when they are talking about plants, animals, and other living things. They do this by \_\_\_\_\_.

- A leaving out some plants
- B leaving out some animals
- C classifying plants and animals
- D only talking about invertebrates

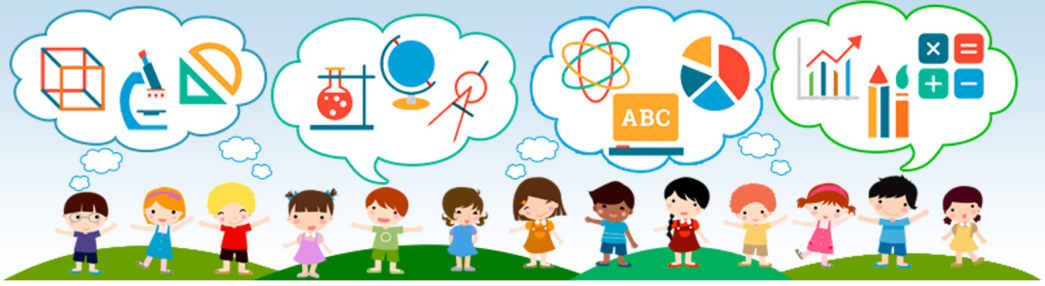
2 **Carolus Linnaeus** first developed a classification system for living things in the 1750's. **How did he choose to classify living organisms?**

- A by their color
- B by their structures and characteristics
- C by their size
- D by their sight



3 The **6-kingdom classification system** is organized in order as: kingdom, phylum, class, order, \_\_\_\_\_.

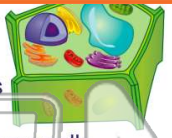
4 A **kingdom** is the largest group of organisms. **What is the smallest, most specific group** \_\_\_\_\_.



5 **PREVIEW**  
Please [Sign In](#) or [Sign Up](#) to download the printable version of this worksheet

6 **Plants** have \_\_\_\_\_.

- A cells with a nucleus
- B cells without a nucleus
- C cells with two nuclei
- D some cells with and some cells without a nucleus



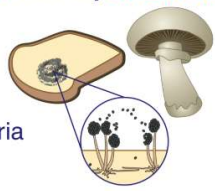
7 **Animals** cannot \_\_\_\_\_.

- A run
- B take in oxygen
- C make their own food
- D produce offspring



9 Organisms in the \_\_\_\_\_ Kingdom are mostly **multicellular**, their cells have a **nucleus**, and they **obtain their own food**.

- A Plants
- B Fungi
- C Archaeobacteria
- D Eubacteria



10 Mason was walking in the woods and happened to see some mushrooms on the ground. **Mushrooms** belong in the \_\_\_\_\_ Kingdom.

- A Archaeobacteria
- B Plant
- C Fungi
- D Protists

