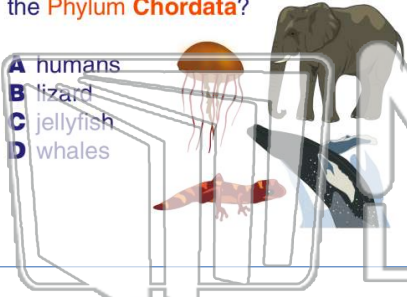




Name _____ Class _____ Date _____

1 Which species does **not** belong within the **Phylum Chordata**?

- A humans
- B lizard
- C jellyfish
- D whales



2 A **fish** is an organism that is _____.

- A an endothermic invertebrate with fins and lives in the water
- B an endothermic vertebrate with legs and lives on land
- C an ectothermic vertebrate with fins and lives in the water
- D an ectothermic invertebrate with legs and lives on land

3 A **notochord** is a rod that is flexible and supports an organism's backbone.

Why is a notochord helpful to **chordates**?

4 In a **reptile**, the **nerve cord** is called the _____.

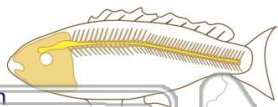


PREVIEW

Please [Sign In](#) or [Sign Up](#) to download the printable version of this worksheet

7 _____

- A complex
- B simple
- C exoskeleton
- D endoskeleton



_____ on land?

- A It protects the animal against predators.
- B It allows organisms to molt.
- C It grows as the organism grows.
- D It changes shape.

9 How much **internal heat** does an organism produce if they are considered to be **ectotherms**?

- A none
- B a small amount
- C a large amount
- D enough to heat the environment outside the body



10 Why does a **lizard** lay in the **sun**?

- A to get a tan
- B to hide from their prey
- C to lower its body temperature
- D to increase its body temperature

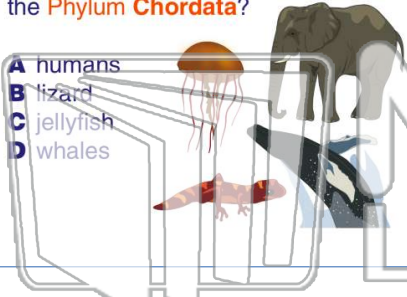




Name _____ Class _____ Date _____

1 Which species does **not** belong within the **Phylum Chordata**?

- A humans
- B lizard
- C jellyfish
- D whales



2 A **fish** is an organism that is _____.

- A an endothermic invertebrate with fins and lives in the water
- B an endothermic vertebrate with legs and lives on land
- C an ectothermic vertebrate with fins and lives in the water
- D an ectothermic invertebrate with legs and lives on land

3 A **notochord** is a rod that is flexible and supports an organism's backbone.

Why is a notochord helpful to **chordates**?

4 In a **reptile**, the **nerve cord** is called the _____.

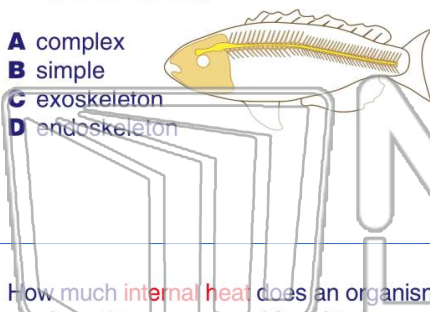


PREVIEW

Please [Sign In](#) or [Sign Up](#) to download the printable version of this worksheet

7 _____ on land?

- A complex
- B simple
- C exoskeleton
- D endoskeleton



- A It protects the animal against predators.
- B It allows organisms to molt.
- C It grows as the organism grows.
- D It changes shape.

9 How much **internal heat** does an organism produce if they are considered to be **ectotherms**?

- A none
- B a small amount
- C a large amount
- D enough to heat the environment outside the body



10 Why does a **lizard** lay in the **sun**?

- A to get a tan
- B to hide from their prey
- C to lower its body temperature
- D to increase its body temperature

