



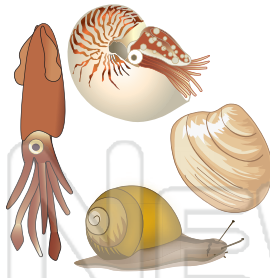
# Mollusks, Arthropods & Echinoderms

Name \_\_\_\_\_ Class \_\_\_\_\_ Date \_\_\_\_\_

1 Which is a **characteristic** of a **mollusk**?

Circle the answer letter.

- a. segmented body
- b. unsegmented body
- c. unicellular
- d. prokaryote



6 **Crustaceans** are \_\_\_\_\_ with **appendages** for chewing and two or three **body segments**.

- a. arthropods
- b. gastropods
- c. bivalves



2 The \_\_\_\_\_ is a thin **layer of tissue** that **covers the internal organs** of **mollusks**.

- a. kidney



7 Fill in the answers.

**Insects** have \_\_\_\_\_ **body segments**.

The \_\_\_\_\_ is the **middle section** to



3 A b ir s



te that is on the



## PREVIEW

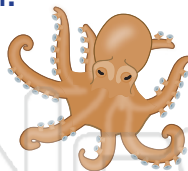
4 Please [Sign In](#) or [Sign Up](#) to download the printable version of this worksheet

is made the body



environment. Circle the answer.

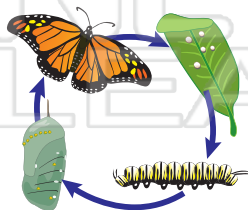
- Gastropods      Sponges
- Cephalopods    Bivalves



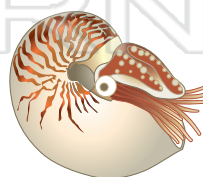
- a. water vascular system
- b. respiratory system
- c. reproductive organs

5 Fill in the answer.

is a **process** in which an **organism's body changes dramatically** during its overall life cycle.



10 Which animal is **not an arthropod**? Cross it out.





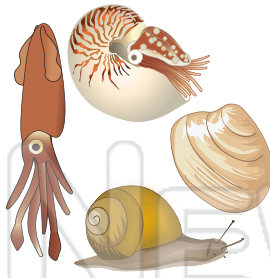
# Mollusks, Arthropods & Echinoderms - Answer Key

Name \_\_\_\_\_ Class \_\_\_\_\_ Date \_\_\_\_\_

1 Which is a **characteristic** of a **mollusk**?

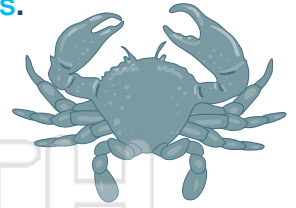
Circle the answer letter.

- a. segmented body
- b. unsegmented body
- c. unicellular
- d. prokaryote



6 **Crustaceans** are \_\_\_\_\_ with **appendages** for chewing and two or three **body segments**.

- a. arthropods
- b. gastropods
- c. bivalves



2 The \_\_\_\_\_ is a thin **layer of tissue** that **covers the internal organs** of **mollusks**.

- a. kidney



7 Fill in the answers.

**Insects** have 3 **body segments**.

The thorax is the **middle section** to



3 A b ir s



te that is on the



## PREVIEW

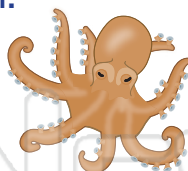
Please [Sign In](#) or [Sign Up](#) to download the printable version of this worksheet

is made he body



4 o v environment. Circle the answer.

- Gastropods
- Sponges
- Cephalopods
- Bivalves

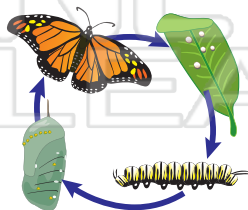


- a. water vascular system
- b. respiratory system
- c. reproductive organs

5 Fill in the answer.

**Metamorphosis**

is a **process** in which an **organism's body changes dramatically** during its overall life cycle.



10 Which animal is **not an arthropod**? Cross it out.

