

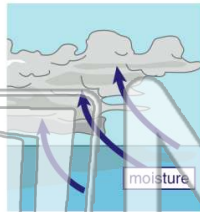


Name _____ Class _____ Date _____

1

The **energy** that powers hurricanes comes from _____.

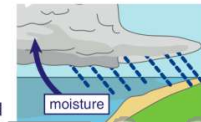
- A static electricity built up in cumulus clouds
- B winds blowing across the ocean
- C water vapor from ocean water
- D the sun



2

What will happen to a hurricane when it moves **over land** and why?

- A It increases in strength because the warm land makes it grow.
- B It decreases in strength because it loses its source of energy, water vapor from an ocean.
- C Hurricanes generally bounce back to sea when they hit a continent.
- D It increases in strength due to continental tropical air masses.



3

The **strongest, fastest winds** of a hurricane occur _____.

- A at the eye wall



4

The wall of **water** pushed onto **shore** by the force of a hurricane is called the _____.

- A tornado

5



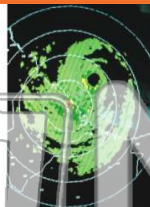
PREVIEW

Please [Sign In](#) or [Sign Up](#) to download the printable version of this worksheet

7

future weather events in a given area. **What information does radar provide?**

- A the location, movement, and intensity of precipitation
- B wind speed and direction
- C atmospheric pressure
- D all of the above



- A a warm front
- B a cold front
- C a stationary front
- D an occluded front



9

Describe the weather in **North Dakota** and **South Dakota** based on the information on this map.

- A warm and cloudy
- B warm with severe storms
- C cool and sunny
- D cool with severe storms

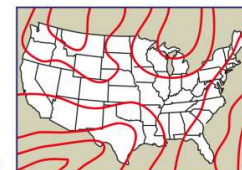


10

This weather map shows line of **equal atmospheric pressure**. They look like the contour lines on a geologic map.

What are these lines called?

- A contour lines
- B weather fronts
- C isobars
- D stationary fronts



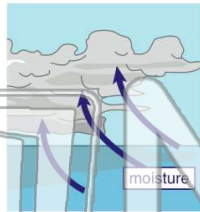


Name _____ Class _____ Date _____

1

The **energy** that powers hurricanes comes from _____.

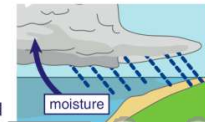
- A static electricity built up in cumulus clouds
- B winds blowing across the ocean
- C water vapor from ocean water
- D the sun



2

What will happen to a hurricane when it moves **over land** and why?

- A It increases in strength because the warm land makes it grow.
- B It decreases in strength because it loses its source of energy, water vapor from an ocean.
- C Hurricanes generally bounce back to sea when they hit a continent.
- D It increases in strength due to continental tropical air masses.



3

The **strongest, fastest winds** of a hurricane occur _____.

- A at the eye wall



4

The wall of **water** pushed onto **shore** by the force of a hurricane is called the _____.

- A tornado

5



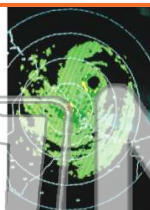
PREVIEW

Please [Sign In](#) or [Sign Up](#) to download the printable version of this worksheet

7

future weather events in a given area. **What information does radar provide?**

- A the location, movement, and intensity of precipitation
- B wind speed and direction
- C atmospheric pressure
- D all of the above



- A a warm front
- B a cold front
- C a stationary front
- D an occluded front



9

Describe the weather in **North Dakota** and **South Dakota** based on the information on this map.

- A warm and cloudy
- B warm with severe storms
- C cool and sunny
- D cool with severe storms



10

This weather map shows line of **equal atmospheric pressure**. They look like the contour lines on a geologic map.

What are these lines called?

- A contour lines
- B weather fronts
- C isobars
- D stationary fronts

