

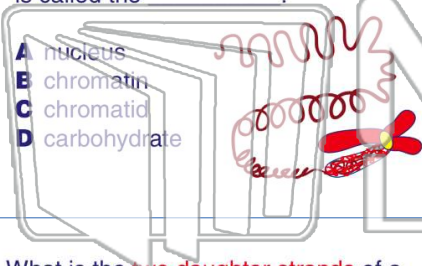


Name _____ Class _____ Date _____

1

The **genetic material** that has the instructions for how the cell is to be run is called the

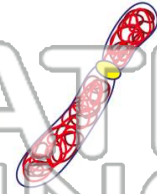
- A nucleus
- B chromatin
- C chromatid
- D carbohydrate



2

What is **one half or one rod** of the **condensed chromatin** called?

- A DNA
- B chromatin
- C chromatid
- D chromosome



3

What is the **two daughter strands** of a replicated chromatin that are condensed into **two rod shaped structures** and

4

The following describes _____ during **mitosis**. The **chromatin condenses** and **spindle fibers form** at each side of

5



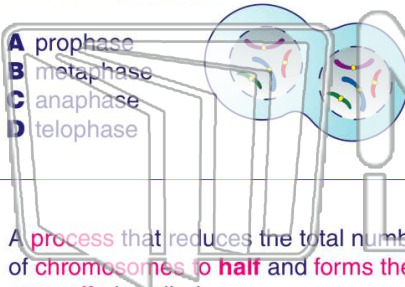
PREVIEW

Please [Sign In](#) or [Sign Up](#) to download the printable version of this worksheet

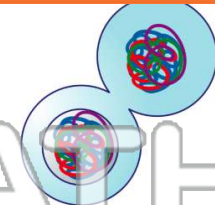
7

and the **nuclear membrane** begins to form around the **chromatin**.

- A prophase
- B metaphase
- C anaphase
- D telophase



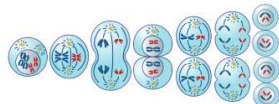
- A cytokinesis
- B telophase
- C interphase
- D anaphase



9

A **process** that reduces the total number of **chromosomes to half** and forms the **sex cells** is called _____.

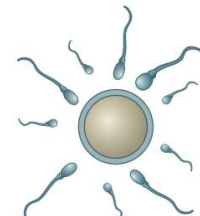
- A mitosis
- B meiosis
- C replication
- D reduction



10

The process of **meiosis** only creates **sex cells**.

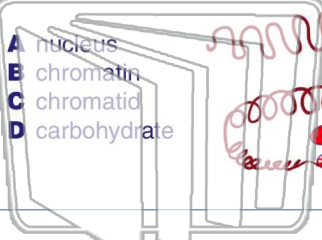
- A true
- B false





Name _____ Class _____ Date _____

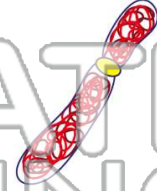
1 The **genetic material** that has the instructions for how the cell is to be run is called the



- A nucleus
- B chromatin
- C chromatid
- D carbohydrate

2 What is **one half or one rod** of the **condensed chromatin** called?

- A DNA
- B chromatin
- C chromatid
- D chromosome



3 What is the **two daughter strands** of a replicated chromatin that are condensed into **two rod shaped structures** and

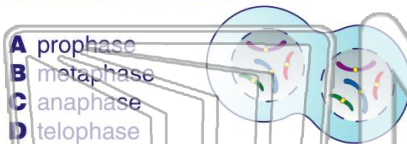
4 The following describes _____ during **mitosis**. The **chromatin condenses** and **spindle fibers form** at each side of



PREVIEW

Please [Sign In](#) or [Sign Up](#) to download the printable version of this worksheet

7 During **mitosis**, the **chromosomes** become and the **nuclear membrane** begins to form around the **chromatin**.



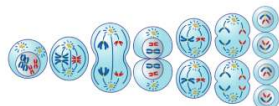
- A prophase
- B metaphase
- C anaphase
- D telophase



- A cytokinesis
- B telophase
- C interphase
- D anaphase

9 A **process** that reduces the total number of **chromosomes to half** and forms the **sex cells** is called _____.

- A mitosis
- B meiosis
- C replication
- D reduction



10 The process of **meiosis** only creates **sex cells**.

- A true
- B false

