



Name _____ Class _____ Date _____

1

In this picture, there obviously has been **movement** on the **fault**, which caused an **earthquake**. What type of fault is this?

- A normal fault
- B reverse fault
- C transform fault
- D tensional fault

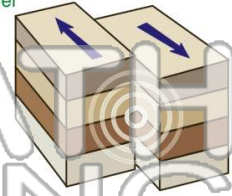


2

Stress causes rock to fold. When the stress is too great, the rock breaks. When rock breaks, energy is released. This energy causes an earthquake.

Energy waves that travel through the earth are called _____.

- A nuclear energy waves
- B solar waves
- C seismic waves
- D oceanic waves



3

When an earthquake occurs, three different types of seismic waves are released. One type of seismic waves are known as P-waves.

What is true about P-waves?

4

The seismic waves known as P-waves _____.

- A move rock side



5



PREVIEW

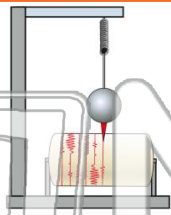
Please [Sign In](#) or [Sign Up](#) to download the printable version of this worksheet

7

The word seismograph comes from two Greek words combined;

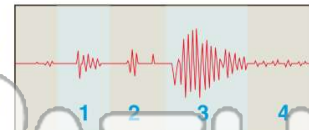
seismos means _____ and **graphein** means to **write**.

- A paper
- B violent
- C vibration
- D large



10

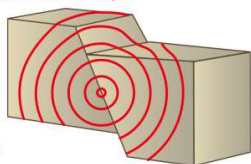
- A section 1
- B section 2
- C section 3
- D section 4



9

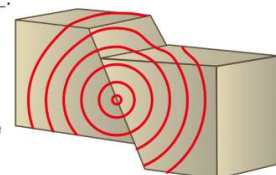
This picture shows where an earthquake began. The point on the **surface** of the earth, **directly above** the point where the **earthquake began** on the fault, is called _____.

- A the focus
- B the epicenter
- C the normal fault
- D the seismogram



An **earthquake begins** at a point on a fault **deep** in the earth's crust, which geologists call the _____.

- A seismograph
- B epicenter
- C focus
- D Richter scale





Name _____ Class _____ Date _____

1

In this picture, there obviously has been **movement** on the **fault**, which caused an **earthquake**. What type of fault is this?

- A normal fault
- B reverse fault
- C transform fault
- D tensional fault

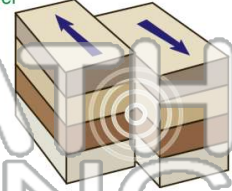


2

Stress causes rock to fold. When the stress is too great, the rock breaks. When rock breaks, energy is released. This energy causes an earthquake.

Energy waves that travel through the earth are called _____.

- A nuclear energy waves
- B solar waves
- C seismic waves
- D oceanic waves



3

When an earthquake occurs, three different types of seismic waves are released. One type of seismic waves are known as P-waves.

What is true about P-waves?

4

The seismic waves known as P-waves _____.

- A move rock side



5



PREVIEW

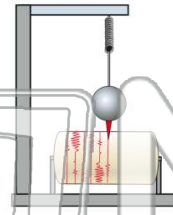
Please [Sign In](#) or [Sign Up](#) to download the printable version of this worksheet

7

The word seismograph comes from two Greek words combined;

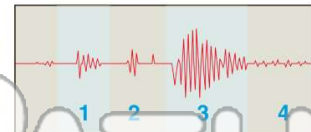
seismos means _____ and **graphein** means to **write**.

- A paper
- B violent
- C vibration
- D large



10

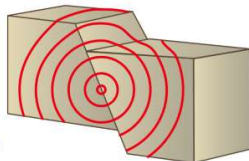
- A section 1
- B section 2
- C section 3
- D section 4



9

This picture shows where an earthquake began. The point on the **surface** of the earth, **directly above** the point where the **earthquake began** on the fault, is called _____.

- A the focus
- B the epicenter
- C the normal fault
- D the seismogram



An **earthquake begins** at a point on a fault **deep** in the earth's crust, which geologists call the _____.

- A seismograph
- B epicenter
- C focus
- D Richter scale

