



Name \_\_\_\_\_ Class \_\_\_\_\_ Date \_\_\_\_\_

1 There are two zones in the **pelagic environment**, the neritic zone and the oceanic zone. It is common to find dolphins, whales, and fish in the neritic zone. **Which zone is most likely to have the highest pressures and lowest temperatures as well as very little light?**

A neritic zone  
B oceanic zone  
C sublittoral zone  
D intertidal zone



2 The shallowest of the zones of the benthic environment is called the **intertidal zone**. **This zone is characterized by \_\_\_\_\_.**

A great stability of temperature and water pressure  
B exposure to air when the tide goes out  
C lack of sunlight  
D the absence of plants and most animals



3 What conclusion can you draw about the life forms found in the **abyssal zone** if you know that this zone has **no sunlight**.

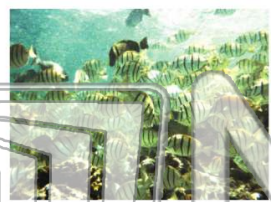
4 A depression in ocean sediments in the intertidal zone which holds **ocean water** and supports life, even when the **tide goes out**, is known as a



5 **PREVIEW**  
Please [Sign In](#) or [Sign Up](#) to download the printable version of this worksheet

7 **environment.**

A neritic zone  
B oceanic zone  
C abyssal zone  
D twilight zone



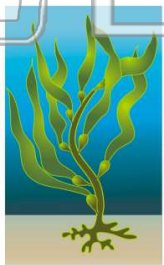
**Continental shelf:** The amount of sunlight, the temperature, and the water pressure are fairly **constant** in this zone. Expanses of coral and a wide **variety of animal** life lives from and with the coral there.

A intertidal  
B sublittoral  
C bathyal  
D abyssal



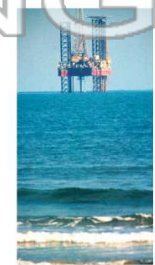
9 A common green plant that grows in abundance in the ocean is **seaweed**. Some varieties of seaweed are used as food. **Seaweed is a species of \_\_\_\_\_.**

A fungus      C algae  
B fern         D coral



10 **Oil and natural gas** deposits are found deep under the ocean floor.

A true; but only in very small amounts  
B false; they are only found under continental crust  
C true; in significant quantities  
D false; oil and natural gas are mostly recovered in the Middle East





Name \_\_\_\_\_ Class \_\_\_\_\_ Date \_\_\_\_\_

1 There are two zones in the **pelagic environment**, the neritic zone and the oceanic zone. It is common to find dolphins, whales, and fish in the neritic zone. Which zone is most likely to have the **highest pressures and lowest temperatures as well as very little light?**

A neritic zone  
B oceanic zone  
C sublittoral zone  
D intertidal zone



2 The shallowest of the zones of the benthic environment is called the **intertidal zone**. This zone is characterized by \_\_\_\_\_.

A great stability of temperature and water pressure  
B exposure to air when the tide goes out  
C lack of sunlight  
D the absence of plants and most animals



3 What conclusion can you draw about the life forms found in the **abyssal zone** if you know that this zone has **no sunlight**.

4 A depression in ocean sediments in the intertidal zone which holds **ocean water** and supports life, even when the **tide goes out**, is known as a \_\_\_\_\_.

5



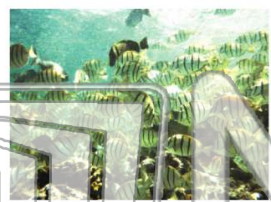
**PREVIEW**

Please [Sign In](#) or [Sign Up](#) to download the printable version of this worksheet

7

environment.

A neritic zone  
B oceanic zone  
C abyssal zone  
D twilight zone



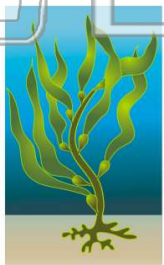
**Continental shelf:** The amount of sunlight, the temperature, and the water pressure are fairly **constant** in this zone. Expanses of coral and a wide **variety of animal** life lives from and with the coral there.

A intertidal  
B sublittoral  
C bathyal  
D abyssal



9 A common green plant that grows in abundance in the ocean is **seaweed**. Some varieties of seaweed are used as food. **Seaweed is a species of \_\_\_\_\_.**

A fungus      C algae  
B fern         D coral



10 **Oil and natural gas** deposits are found deep under the ocean floor.

A true; but only in very small amounts  
B false; they are only found under continental crust  
C true; in significant quantities  
D false; oil and natural gas are mostly recovered in the Middle East

