



Name _____ Class _____ Date _____

1 _____ is an organism in its earliest stages of growth.

- A A seed
- B An egg
- C A sperm
- D An embryo



2 **Cotyledons** are one or two seed leaf structures that store food within.

- A true
- B false



3 What is the purpose of the **seed coat**?



4 During **germination**, the _____.

- A plant begins growing
- B fertilization occurs



5

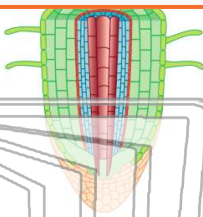


PREVIEW

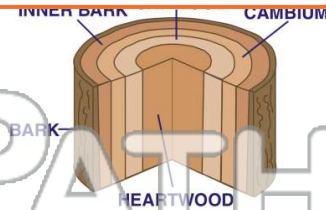
Please [Sign In](#) or [Sign Up](#) to download the printable version of this worksheet

7

- A dead
- B live
- C xylem
- D phloem



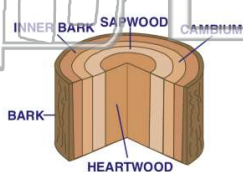
- A soft
- B rigid
- C long
- D short



9

The **cambium**

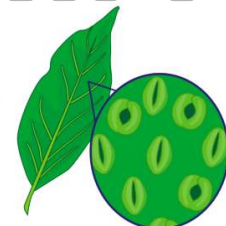
- A brings food to the plant cells
- B brings waste away from the cells
- C controls the vascular tissue
- D produces the vascular tissue



10

Which structures have **stomata**?

- A roots
- B stems
- C leaves
- D xylem

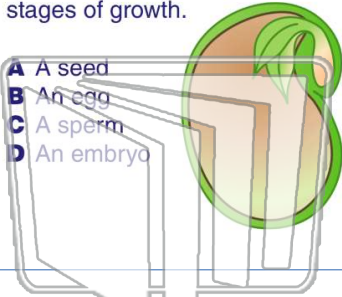




Name _____ Class _____ Date _____

1 _____ is an organism in its earliest stages of growth.

- A A seed
- B An egg
- C A sperm
- D An embryo



2 **Cotyledons** are one or two seed leaf structures that store food within.

- A true
- B false



3 What is the purpose of the **seed coat**?

4 During **germination**, the _____.

- A plant begins growing
- B fertilization occurs

5

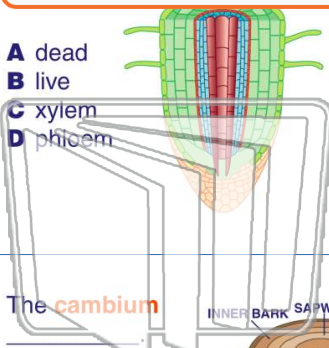


PREVIEW

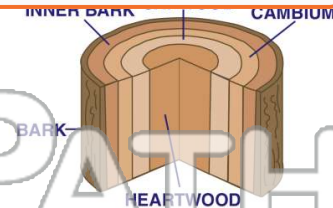
Please [Sign In](#) or [Sign Up](#) to download the printable version of this worksheet

7

- A dead
- B live
- C xylem
- D phloem



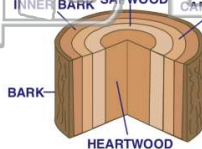
- A soft
- B rigid
- C long
- D short



9

The **cambium**

- A brings food to the plant cells
- B brings waste away from the cells
- C controls the vascular tissue
- D produces the vascular tissue



10

Which structures have **stomata**?

- A roots
- B stems
- C leaves
- D xylem

