



Name _____ Class _____ Date _____

1 What is the **function** of the **circulatory system**?

- A to help the legs move.
- B to give the body support and shape
- C to break down nutrients
- D to transport oxygen in and wastes out of cells



2 The **heart** is made of _____ **muscle**.

- A cardiac
- B epithelial
- C connective
- D smooth



3 What structure **separates** the **right and left sides** of the heart?



4 What is the **function** of a **heart valve**?

- A to monitor how much blood



5



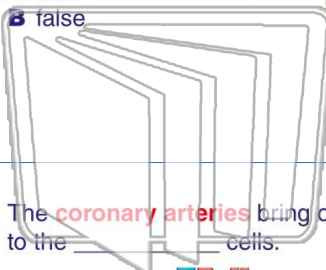
PREVIEW

Please [Sign In](#) or [Sign Up](#) to download the printable version of this worksheet

7

heart to the lungs.

- A true
- B false

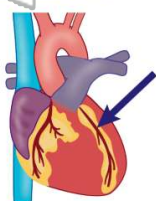


- A coronary artery
- B aorta
- C heart
- D plasma



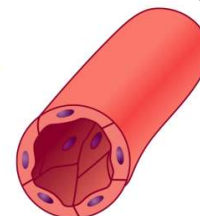
9 The **coronary arteries** bring oxygen to the _____ cells.

- A muscle
- B brain
- C heart
- D lung



10 How **thick** are the walls of **capillaries**?

- A one cell
- B three layers
- C two layers
- D two cells





Name _____ Class _____ Date _____

1 What is the **function** of the **circulatory system**?

- A to help the legs move.
- B to give the body support and shape
- C to break down nutrients
- D to transport oxygen in and wastes out of cells



2 The **heart** is made of _____ **muscle**.

- A cardiac
- B epithelial
- C connective
- D smooth



3 What structure **separates** the **right and left sides** of the heart?



4 What is the **function** of a **heart valve**?

- A to monitor how much blood



5



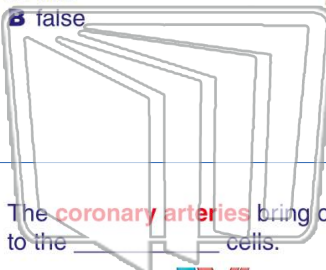
PREVIEW

Please [Sign In](#) or [Sign Up](#) to download the printable version of this worksheet

7

heart to the lungs.

- A true
- B false

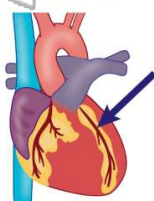


- A coronary artery
- B aorta
- C heart
- D plasma



9 The **coronary arteries** bring oxygen to the _____ cells.

- A muscle
- B brain
- C heart
- D lung



10 How **thick** are the walls of **capillaries**?

- A one cell
- B three layers
- C two layers
- D two cells

