



Name \_\_\_\_\_ Class \_\_\_\_\_ Date \_\_\_\_\_

1 Which is not a **component** of blood?

A red blood cells  
 B plasma  
 C white blood cells  
 D platelets

2 **Over half** of the **blood** consists of \_\_\_\_\_.

A red blood cells  
 B plasma  
 C white blood cells  
 D platelets

3 \_\_\_\_\_ is a **protein** in red blood cells that binds together with oxygen molecules.

4 What is **fibrin**?

A a protein the binds

5

**PREVIEW**

Please [Sign In](#) or [Sign Up](#) to download the printable version of this worksheet

7

A eliminate wastes from the body  
 B bring oxygen to the cells  
 C recover liquids from the blood  
 D break down nutrients

9 \_\_\_\_\_ is an **organism** that causes **disease**.

A A pathogen  
 B A phagocyte  
 C An antigen  
 D An antibody

A part of the lymph  
 B veinlike structures that bring the lymph back to the bloodstream.  
 C the pump of the lymphatic system  
 D structures that filter lymph

10 An **infectious disease** is a disease that can be **spread** from one organism to another.

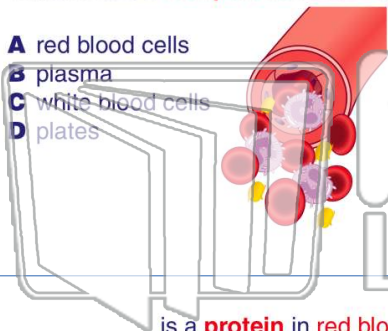
A true  
 B false



Name \_\_\_\_\_ Class \_\_\_\_\_ Date \_\_\_\_\_

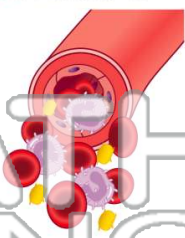
1 Which is not a **component** of blood?

- A red blood cells
- B plasma
- C white blood cells
- D platelets



2 **Over half** of the **blood** consists of \_\_\_\_\_.

- A red blood cells
- B plasma
- C white blood cells
- D platelets



3 \_\_\_\_\_ is a **protein** in **red blood cells** that binds together with oxygen molecules.

4 What is **fibrin**?

- A a protein the binds



5



## PREVIEW

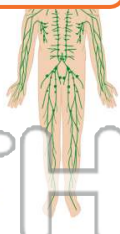
Please [Sign In](#) or [Sign Up](#) to download the printable version of this worksheet

7

- A eliminate wastes from the body
- B bring oxygen to the cells
- C recover liquids from the blood
- D break down nutrients



- A part of the lymph
- B veinlike structures that bring the lymph back to the bloodstream.
- C the pump of the lymphatic system
- D structures that filter lymph



9

\_\_\_\_\_ is an **organism** that causes **disease**.

- A A pathogen
- B A phagocyte
- C An antigen
- D An antibody



10

An **infectious disease** is a disease that can be **spread** from one organism to another.

- A true
- B false

