



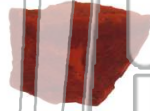
Name \_\_\_\_\_ Class \_\_\_\_\_ Date \_\_\_\_\_

1

The streak test is a simple way of observing the **color** of a mineral when it is crushed to a **powder**. It is accomplished by rubbing a mineral across a piece of unglazed porcelain.

The mineral hematite can be **silver, black, or red**. No matter what color the specimen is, the **streak** for hematite is always \_\_\_\_\_.

- A black
- B metallic black
- C red-brown
- D pink



2

Some minerals possess unique **optical properties**. Pieces of clear calcite, for example, break a single ray of light into **two rays**. The image of a single line will look like **two lines** under a piece of calcite.

This optical property is called \_\_\_\_\_.

- A specific gravity
- B conchoidal fracture
- C octahedral cleavage
- D double refraction

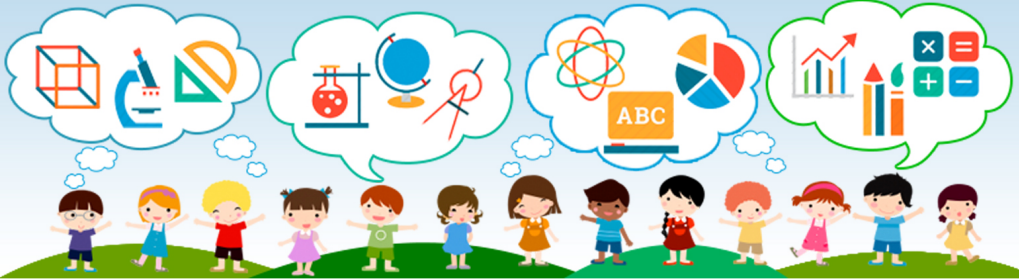


3

The **density** of an object is a way of measuring how much matter occupies a given space. The density of a mineral depends on which elements make up that mineral. Mineralogists \_\_\_\_\_

4

Imagine trying to identify the mineral pictured here. By comparing the mineral to the following chart, it is possible to **identify the mineral**.



5

## PREVIEW

Please [Sign In](#) or [Sign Up](#) to download the printable version of this worksheet

7

must have grown **very quickly** in order to be so large.

- A true
- B false

True or false?



called **metamorphic rocks** and the minerals include garnet, staurolite, asbestos, talc, and others.

These minerals formed \_\_\_\_\_.

- A on the ocean floors
- B near the surface of the earth in magma chambers
- C deep in the crust of the earth
- D on the surface of the earth's crust after erosion



9

The water around a body of liquid rock (called **magma**) can get so **hot** that it can **dissolve metals**, just like water can dissolve salt. Which of the following minerals could have formed in the **hot waters** around a magma body?

- A fluorite
- B quartz
- C topaz
- D copper



10

In order to be considered an **ore**, geologists have determined that a mineral deposit must be **large, pure, and profitable**.

True or false?

- A true
- B false



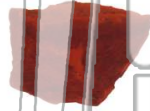


Name \_\_\_\_\_ Class \_\_\_\_\_ Date \_\_\_\_\_

1 The streak test is a simple way of observing the **color** of a mineral when it is crushed to a **powder**. It is accomplished by rubbing a mineral across a piece of unglazed porcelain.

The mineral hematite can be **silver, black, or red**. No matter what color the specimen is, the **streak** for hematite is always \_\_\_\_\_.

- A black
- B metallic black
- C red-brown
- D pink



2 Some minerals possess unique **optical properties**. Pieces of clear calcite, for example, break a single ray of light into **two rays**. The image of a single line will look like **two lines** under a piece of calcite.

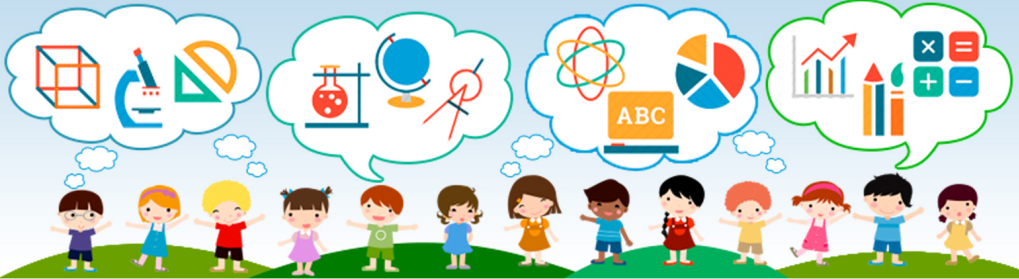
This optical property is called \_\_\_\_\_.

- A specific gravity
- B conchoidal fracture
- C octahedral cleavage
- D double refraction



3 The **density** of an object is a way of measuring how much matter occupies a given space. The density of a mineral depends on which elements make up that mineral. Mineralogists \_\_\_\_\_

4 Imagine trying to identify the mineral pictured here. By comparing the mineral to the following chart, it is possible to **identify the mineral**.



## PREVIEW

Please [Sign In](#) or [Sign Up](#) to download the printable version of this worksheet

7 \_\_\_\_\_ must have grown **very quickly** in order to be so large.

\_\_\_\_\_ called **metamorphic rocks** and the minerals include garnet, staurolite, asbestos, talc, and others.

These minerals formed \_\_\_\_\_.

- A on the ocean floors
- B near the surface of the earth in magma chambers
- C deep in the crust of the earth
- D on the surface of the earth's crust after erosion



8 **True or false?**

- A true
- B false



9 The water around a body of liquid rock (called **magma**) can get so **hot** that it can **dissolve metals**, just like water can dissolve salt. Which of the following minerals could have formed in the **hot waters** around a magma body?

- A fluorite
- B quartz
- C topaz
- D copper



10 In order to be considered an **ore**, geologists have determined that a mineral deposit must be **large, pure, and profitable**. True or false?

- A true
- B false

