



Name _____ Class _____ Date _____

1 For a substance to be called a mineral it must meet four criteria. Which of the following is **not** part of the **definition of a mineral**? Circle the answer letter.

- a. it is a solid
- b. it has a crystal structure
- c. it is made from organic materials
- d. it is formed in nature



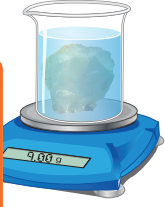
6 The water around a body of **liquid rock** (magma) can get so hot that it can **dissolve metals**. Which **mineral** could have **formed in the hot waters** around a magma body?

- fluorite
- quartz
- topaz
- copper



2 Mineralogists **categorize** minerals into two distinct groups based on their chemical compositions: **silicates** and **nonsilicates**. Which of the following minerals is a

7 Mineralogists determine the density of a mineral by comparing it to the density of an equal volume of water. The **density of a mineral** is called its _____.



PREVIEW

Please [Sign In](#) or [Sign Up](#) to download the printable version of this worksheet

4 **Mica breaks into thin sheets**. This physical feature is called _____. Circle the answer.

- cleavage
- refraction
- fracture
- streak

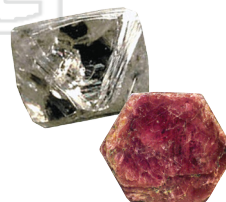


5 What is the **hardest mineral** in Mohs' hardness scale? Write the answer.

Mohs' Hardness Scale	
1 Talc	6 Feldspar
2 Gypsum	7 Quartz
3 Calcite	8 Topaz
4 Fluorite	9 Corundum
5 Apatite	10 Diamond

10 **Gemstones** are special minerals that are hard enough to be **polished**, **colorful** enough to catch the eye, and rare enough to be **valuable**. Cross out the mineral that is **not a gemstone**.

- diamond
- topaz
- beryllium
- uranium
- gypsum
- ruby



graphite

element used to light





Minerals - Answer Key

Name _____ Class _____ Date _____

1 For a substance to be called a mineral it must meet four criteria. Which of the following is **not** part of the **definition of a mineral**? Circle the answer letter.

- a. it is a solid
- b. it has a crystal structure
- c. it is made from organic materials
- d. it is formed in nature



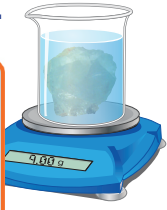
6 The water around a body of **liquid rock** (magma) can get so hot that it can **dissolve metals**. Which **mineral** could have **formed in the hot waters** around a magma body?

- fluorite
- quartz
- topaz
- copper



2 Mineralogists **categorize** minerals into two distinct groups based on their chemical compositions: **silicates** and **nonsilicates**. Which of the following minerals is a

7 Mineralogists determine the density of a mineral by comparing it to the density of an equal volume of water. The **density of a mineral** is called its _____.



PREVIEW

Please [Sign In](#) or [Sign Up](#) to download the printable version of this worksheet

3 Minerals that break into thin sheets. This physical feature is called _____. Circle the answer.

- cleavage
- refraction
- fracture
- streak



5 What is the **hardest mineral** in Mohs' hardness scale? Write the answer.

diamond

Mohs' Hardness Scale	
1 Talc	6 Feldspar
2 Gypsum	7 Quartz
3 Calcite	8 Topaz
4 Fluorite	9 Corundum
5 Apatite	10 Diamond

- aluminum
- germanium
- beryllium
- uranium



10 **Gemstones** are special minerals that are hard enough to be **polished**, **colorful** enough to catch the eye, and rare enough to be **valuable**. Cross out the mineral that is **not a gemstone**.

- diamond
- topaz
- ~~gypsum~~
- ruby

