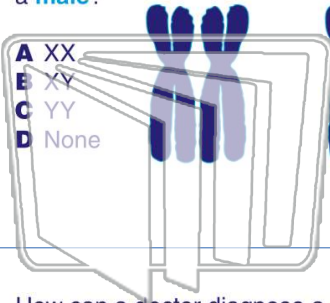




Name _____ Class _____ Date _____

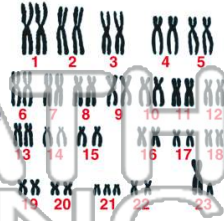
1 Which pair of chromosomes represents a **male**?

- A XX
- B XY
- C YY
- D None



2 Which is an example of a **genetic disorder**?

- A common cold
- B AIDS
- C Down syndrome
- D tendonitis



3 How can a doctor diagnose a genetic disorder **before** a child is born?

4 What is a **karyotype**?

- A a picture of the actual

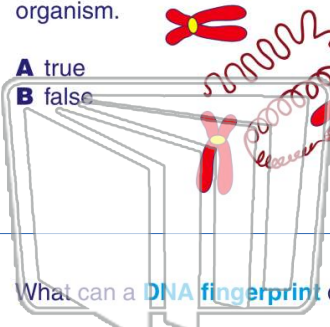


PREVIEW

Please [Sign In](#) or [Sign Up](#) to download the printable version of this worksheet

7 An organism and pairing them into an organism.

- A true
- B false

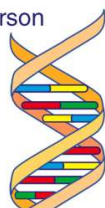


- A determine who touched something
- B count only the number of chromosomes of a person
- C read the pattern of a person's DNA
- D tally the nitrogen base pairs of a person's DNA



9 What can a **DNA fingerprint** do?

- A discover the height of a person
- B breed identical organisms
- C clone organisms
- D identify a person



10 Which of the following can be used to determine a **DNA fingerprint**?

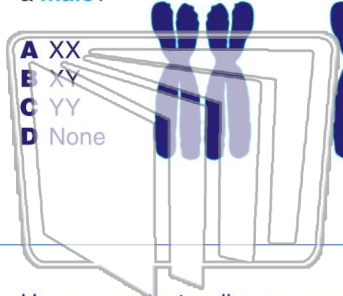
- A hair
- B blood
- C skin
- D all of these





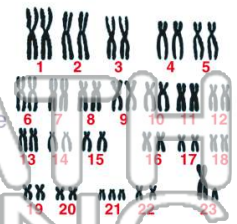
Name _____ Class _____ Date _____

1 Which pair of chromosomes represents a **male**?



- A XX
- B XY
- C YY
- D None

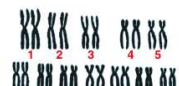
2 Which is an example of a **genetic disorder**?



- A common cold
- B AIDS
- C Down syndrome
- D tendonitis

3 How can a doctor diagnose a genetic disorder **before** a child is born?

4 What is a **karyotype**?



- A a picture of the actual

5



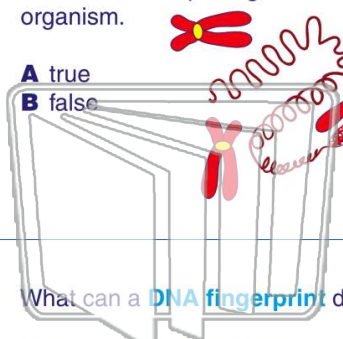
PREVIEW

Please [Sign In](#) or [Sign Up](#) to download the printable version of this worksheet

7

an atom and pairing them into an organism.

- A true
- B false



10

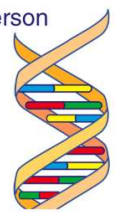
- A determine who touched something
- B count only the number of chromosomes of a person
- C read the pattern of a person's DNA
- D tally the nitrogen base pairs of a person's DNA



9

What can a **DNA fingerprint** do?

- A discover the height of a person
- B breed identical organisms
- C clone organisms
- D identify a person



Which of the following can be used to determine a **DNA fingerprint**?

- A hair
- B blood
- C skin
- D all of these

